

This pricing supplement, which is not complete and may be changed, relates to an effective Registration Statement under the Securities Act of 1933. This pricing supplement and the accompanying prospectus supplement and prospectus are not an offer to sell these notes in any country or jurisdiction where such an offer would not be permitted.

Pricing Supplement No. ____
Preliminary Pricing Supplement - Subject to Completion
(To Prospectus dated April 20, 2009
and Series L Prospectus Supplement dated April 21, 2009)
June 3, 2010



§ ____
20-Year Callable Capped Notes Linked to the Difference between the 30-Year and the 2-Year U.S. Dollar Constant Maturity Swap Rates, due June , 2030

- The notes are senior unsecured debt securities issued by Bank of America Corporation. Subject to our credit risk, the notes are 100% principal protected on the maturity date or date of early redemption, as applicable.
 - The notes will be issued in denominations of whole units. Each unit will have a principal amount of \$1,000.
 - The notes are designed for investors who wish to receive quarterly interest income, where, as described below, the amount of such interest depends on the amount by which the Spread Differential exceeds the Strike (each as defined below) as of the applicable interest determination date (as defined below).
 - Interest will be paid quarterly on March , June , September , and December of each year, beginning September , 2010.
 - During the first four quarterly interest periods, interest on the notes will accrue at the rate of 15.00% per annum.
 - During each subsequent quarterly interest period beginning on June , 2011, interest on the notes will accrue at a rate per annum equal to the product of (a) 4 and (b) the amount by which the 30-year U.S. Dollar Constant Maturity Swap Rate exceeds the 2-year U.S. Dollar Constant Maturity Swap Rate on the applicable interest determination date, each expressed as a percentage (such amount, which may be negative, the "Spread Differential"), minus the Strike. The Strike will be 0.25%. In no event will the interest rate applicable to any interest period be greater than 15.00% per annum or less than 0.00% per annum.
- We further describe how to determine the interest payable on the notes beginning on page PS-13.
- At maturity, if the notes have not been previously redeemed, you will receive for each unit of your notes a cash payment equal to the \$1,000 principal amount, plus any accrued but unpaid interest.
 - We may redeem all of the notes on any quarterly interest payment date on or after June , 2014 (an "Early Redemption Date"). If redeemed early, you will receive for each unit of your notes a cash payment equal to the \$1,000 principal amount, plus any accrued but unpaid interest to but excluding the Early Redemption Date.
 - The notes will not be listed on any securities exchange.
 - In connection with this offering, Merrill Lynch, Pierce, Fenner & Smith Incorporated ("MLPF&S") is acting in its capacity as a principal for your account.
 - The CUSIP number for the notes is ____.
 - The notes will be offered at varying public offering prices related to prevailing market prices. The public offering price will include accrued interest from June , 2010, if settlement occurs after that date.
 - The purchase price of the notes to the selling agent will be [96.00]% of the \$1,000 principal amount per unit.

The notes are unsecured and are not savings accounts, deposits, or other obligations of a bank. The notes are not guaranteed by Bank of America, N.A. ("BANA") or any other bank, are not insured by the Federal Deposit Insurance Corporation (the "FDIC") or any other governmental agency and involve investment risks. Potential purchasers of the notes should consider the information in "Risk Factors" beginning on page PS-8, page S-4 of the attached prospectus supplement, and page 8 of the attached prospectus.

None of the Securities and Exchange Commission (the "SEC"), any state securities commission, or any other regulatory body has approved or disapproved of these notes or passed upon the adequacy or accuracy of this pricing supplement, the accompanying prospectus supplement, or the accompanying prospectus. Any representation to the contrary is a criminal offense.

We will deliver the notes in book-entry form only through The Depository Trust Company on or about June , 2010 against payment in immediately available funds.

BofA Merrill Lynch
Selling Agent

[Table of Contents](#)

TABLE OF CONTENTS

	Page
SUMMARY	PS-3
RISK FACTORS	PS-8
USE OF PROCEEDS	PS-12
DESCRIPTION OF THE NOTES	PS-13
THE 30-YEAR U.S. DOLLAR CONSTANT MATURITY SWAP RATE (CMS30) AND THE 2-YEAR U.S. DOLLAR CONSTANT MATURITY SWAP RATE (CMS2)	PS-16
SUPPLEMENTAL PLAN OF DISTRIBUTION	PS-19
U.S. FEDERAL INCOME TAX SUMMARY	PS-20
ERISA CONSIDERATIONS	PS-27

PS-2

SUMMARY

This summary includes questions and answers that highlight selected information from this pricing supplement and the accompanying prospectus supplement and prospectus to help you understand these notes. You should read carefully the entire pricing supplement, prospectus supplement, and prospectus to understand fully the terms of the notes, as well as the tax and other considerations important to you in making a decision about whether to invest in the notes. In particular, you should review carefully the section in this pricing supplement entitled “Risk Factors,” which highlights a number of risks, to determine whether an investment in the notes is appropriate for you. If information in this pricing supplement is inconsistent with the prospectus supplement or prospectus, this pricing supplement will supersede those documents.

Certain capitalized terms used and not defined in this pricing supplement have the meanings ascribed to them in the prospectus supplement and prospectus.

In light of the complexity of the transaction described in this pricing supplement, you are urged to consult with your own attorneys and business and tax advisors before making a decision to purchase any of the notes.

The information in this “Summary” section is qualified in its entirety by the more detailed explanation set forth elsewhere in this pricing supplement and the accompanying prospectus supplement and prospectus. You should rely only on the information contained in this pricing supplement and the accompanying prospectus supplement and prospectus. We have not authorized any other person to provide you with different information. If anyone provides you with different or inconsistent information, you should not rely on it. Neither we nor the selling agent is making an offer to sell these notes in any jurisdiction where the offer or sale is not permitted. You should assume that the information in this pricing supplement, the accompanying prospectus supplement, and prospectus is accurate only as of the date on their respective front covers.

Unless otherwise indicated or unless the context requires otherwise, all references in this document to “we,” “us,” “our,” or similar references are to Bank of America Corporation.

What are the notes?

The notes are senior debt securities issued by Bank of America Corporation, and are not secured by collateral. **The notes will rank equally with all of our other unsecured senior indebtedness from time to time outstanding, and any payments due on the notes, including any repayment of principal, will be subject to our credit risk.** The notes are **not** guaranteed under the FDIC’s Temporary Liquidity Guarantee Program. Unless earlier redeemed, the notes will mature on June , 2030.

The notes differ from traditional debt securities in that their return is linked to the performance of the 30-year and 2-year U.S. Dollar Constant Maturity Swap Rates. The notes are designed for investors who wish to receive quarterly interest income, and are willing to accept that after the first four quarterly interest periods, the amount of interest payable depends on the amount by which the 30-year U.S. Dollar Constant Maturity Swap Rate exceeds the 2-year U.S. Dollar Constant Maturity Swap Rate (such amount, which may be negative, the “Spread Differential”) as of the applicable interest determination date, minus the Strike, as described below. However, in no event will the interest rate applicable to any interest period be greater than 15.00% per annum or less than 0.00% per annum. Interest payable on the notes after June , 2011 may be more or less than the rate that we would pay on a conventional fixed-rate or floating-rate debt security with the same maturity, and may be 0.00% per annum.

Investors in the notes should have a view as to U.S. Dollar Constant Maturity Swap Rates and related interest rate movements, must be willing to forgo guaranteed market rates of interest for most of the term of their investment in the notes, and must be willing to accept that the interest rate after the first four quarterly interest periods is capped at 15.00% per annum and may be 0.00% per annum. Investors must also be prepared to have their notes redeemed by us at our option on any interest payment date on or after June , 2014.

Will you receive interest on the notes?

Yes. During the first four quarterly interest periods, interest on the notes will accrue at 15.00% per annum; and during subsequent quarterly interest periods, the amount of interest will depend on the amount by which the Spread Differential exceeds the Strike, determined as of the applicable interest determination date, as described in this pricing supplement. However, in no event will the interest rate applicable to any interest period be greater than 15.00% per annum or less than 0.00% per annum. Interest will be calculated on the basis of a 360-day year of twelve 30-day months.

Will you receive your principal at maturity?

Yes. If you hold the notes until maturity, you will receive your principal amount and any accrued and unpaid interest on the notes, subject to our credit risk. See “Risk Factors—Payments on the notes are subject to our credit risk, and changes in our credit ratings are expected to affect the value of the notes.” However, if you sell the notes prior to maturity, you may find that the market value of the notes may be less than the principal amount of the notes.

How will the quarterly rate of interest on the notes be determined?

For each quarterly interest period, the calculation agent will determine the applicable annualized interest rate as follows:

- (a) From and including June , 2010 to but excluding June , 2011, interest on the notes will accrue at the rate of 15.00% per annum.
- (b) During each subsequent quarterly interest period beginning on June , 2011, interest will accrue at a rate per annum equal to:

$$4 \times (\text{CMS30} - \text{CMS2} - \text{Strike})$$

In no event will the interest rate applicable to any interest period be greater than 15.00% per annum or less than 0.00% per annum.

There can be no assurance that the interest rate payable on the notes during these quarterly interest periods will be similar to, or greater than, the interest that is payable on a conventional debt security.

The Strike will be 0.25%.

Each quarterly interest period (other than the first quarterly interest period) will commence on, and will include, an interest payment date, and will extend to, but will exclude, the next succeeding interest payment date. The first quarterly interest period will commence on, and will include, June , 2010, and will extend to, but will exclude, September , 2010.

The interest due for each quarterly interest period will be paid on the following interest payment dates: March , June , September , and December of each year, beginning September , 2010, and on the maturity date.

“CMS30” means the 30-year U.S. Dollar Constant Maturity Swap Rate, expressed as a percentage, as quoted on the Reuters Screen ISDAFIX3 Page, at 11:00 a.m., New York City time, on the applicable interest determination date.

“CMS2” means the 2-year U.S. Dollar Constant Maturity Swap Rate, expressed as a percentage, as quoted on the Reuters Screen ISDAFIX3 Page, at 11:00 a.m., New York City time, on the applicable interest determination date.

The “interest determination date” for each quarterly interest period after the first four quarterly interest periods will be the second U.S. Government Securities Business Day (as defined below) prior to the beginning of the applicable quarterly interest period.

Table of Contents

A "U.S. Government Securities Business Day" means any day, other than a Saturday, Sunday, or a day on which the Securities Industry and Financial Markets Association (or any successor thereto) recommends that the fixed income departments of its members be closed for the entire day for purposes of trading in U.S. government securities.

Examples: Below are four examples of the calculation of the annualized interest rate payable on a quarterly interest payment date after June , 2011 for the notes, based on the Strike of 0.25%. These examples are for purposes of illustration only. The actual annualized interest rate to be applied in calculating the interest payable on the notes for any quarterly interest period after the first four quarterly interest periods will depend on the actual levels of CMS30 and CMS2 and the actual Spread Differential (i.e., CMS30 – CMS2) on the applicable interest determination date.

Example 1: The **hypothetical CMS30** is substantially greater than the **hypothetical CMS2** on the interest determination date:

Hypothetical CMS30:	6.25%
Hypothetical CMS2:	2.00%
Strike:	0.25%

$$4 \times (6.25\% - 2.00\% - 0.25\%) = 16.00\%$$

Interest rate payable for that quarterly interest period = 15.00% per annum*(the interest rate cannot be greater than 15.00% per annum)*

Example 2: The **hypothetical CMS30** is greater than the **hypothetical CMS2** on the interest determination date, and the hypothetical Spread Differential is greater than the Strike:

Hypothetical CMS30:	3.25%
Hypothetical CMS2:	2.35%
Strike:	0.25%

$$4 \times (3.25\% - 2.35\% - 0.25\%) = 2.60\%$$

Interest rate payable for that quarterly interest period = 2.60% per annum

Example 3: The **hypothetical CMS30** is greater than the **hypothetical CMS2** on the interest determination date, but the hypothetical Spread Differential is less than the Strike:

Hypothetical CMS30:	3.00%
Hypothetical CMS2:	2.80%
Strike:	0.25%

$$4 \times (3.00\% - 2.80\% - 0.25\%) = -0.20\%$$

Interest rate payable for that quarterly interest period = 0.00% per annum*(the interest rate cannot be less than 0.00% per annum)*

Example 4: The **hypothetical CMS30** is less than the **hypothetical CMS2** on the interest determination date:

Hypothetical CMS30:	3.75%
Hypothetical CMS2:	4.00%
Strike:	0.25%

$$4 \times (3.75\% - 4.00\% - 0.25\%) = -2.00\%$$

Interest rate payable for that quarterly interest period = 0.00% per annum*(the interest rate cannot be less than 0.00% per annum)*

Is it possible that I will not receive any interest for any quarterly interest period after the first four quarterly interest periods?

Yes. After the first four quarterly interest periods, if the Spread Differential is less than or equal to the Strike on the applicable interest determination date, you will not receive any interest for that period. This will be the case even if the Spread Differential exceeds the Strike on other days in a quarterly interest period after the applicable interest determination date.

After the first four quarterly interest periods, is the interest rate on the notes limited in any way?

Yes. The interest rate payable on the notes in all quarterly interest periods will not exceed 15.00% per annum, even if CMS30 significantly exceeds CMS2 on each interest determination date. Further, we may redeem the notes on any quarterly interest payment date on or after June 1, 2014. If we elect to redeem the notes, you will not receive any interest payments after the Early Redemption Date.

Can we redeem your notes before the maturity date?

Yes. We may redeem all of the notes on any quarterly interest payment date on or after June 1, 2014. We are generally more likely to elect to redeem the notes during periods when interest is accruing on the notes at a rate that is greater than that which we would pay on our traditional interest bearing debt securities having a maturity equal to the remaining term of the notes. See the section entitled “Description of the Notes—Early Redemption at Our Option.”

Who will determine the interest rate applicable to each interest amount?

A calculation agent will make all the calculations associated with determining each interest payment. We have appointed our subsidiary, Merrill Lynch Capital Services, Inc. (“MLCS”), to act as calculation agent. See the section entitled “Description of the Notes—Role of the Calculation Agent.”

What do CMS30 and CMS2 measure?

CMS30 and CMS2 are “constant maturity swap rates” that measure the fixed rate of interest payable on a hypothetical fixed-for-floating U.S. dollar interest rate swap transaction with a maturity of 30 years and two years, respectively. In such a hypothetical swap transaction, the fixed rate of interest, payable semi-annually on the basis of a 360-day year consisting of twelve 30-day months, is exchangeable for a floating 3-month LIBOR-based payment stream that is payable quarterly on the basis of the actual number of days elapsed during a quarterly period in a 360-day year. “LIBOR” is the London interbank offered rate and is a common rate of interest used in the swaps industry. See the section entitled “The 30-Year U.S. Dollar Constant Maturity Swap Rate (CMS30) and The 2-Year U.S. Dollar Constant Maturity Swap Rate (CMS2).” The Spread Differential measures the steepness of the swap rate curve from the two-year maturity point to the 30-year maturity point on the curve.

What have been the historic levels of CMS30 and CMS2?

We have included a table and a graph showing the historical month-end and daily spread, respectively, between CMS30 and CMS2 from January 2005 through May 2010, in the section entitled “The 30-Year U.S. Dollar Constant Maturity Swap Rate (CMS30) and The 2-Year U.S. Dollar Constant Maturity Swap Rate (CMS2).” We have provided this historical information to help you evaluate the behavior of these rates in various periods. However, past behavior of these rates is not necessarily indicative of how they will perform in the future.

Who is the selling agent for the notes?

MLPF&S is acting as our selling agent in connection with this offering and will be compensated based on the total principal amount of notes sold. In this capacity, the selling agent is not your fiduciary or advisor, and you should not rely upon any communication from it in connection with the notes as investment advice or a recommendation to purchase the notes. You should make your own investment decision regarding the notes after consulting with your legal, tax, and other advisors.

How are the notes being offered?

We have registered the notes with the SEC in the U.S. However, we are not registering the notes for public distribution in any jurisdiction other than the U.S. The selling agent may solicit offers to purchase the notes from non-U.S. investors in reliance on available private placement exemptions. See the section entitled “Supplemental Plan of Distribution—Selling Restrictions” in the prospectus supplement.

How are the notes treated for U.S. federal income tax purposes?

We intend to take the position that the notes will be treated as contingent payment debt instruments for U.S. federal income tax purposes. Assuming the notes are properly treated as contingent payment debt instruments, you will be required to include income on the notes over their term based upon a comparable yield.

If you are a Non-U.S. Holder, payments on the notes generally will not be subject to U.S. federal income or withholding tax, as long as you provide us with the required completed tax forms.

See the section entitled “U.S. Federal Income Tax Summary.”

Will the notes be listed on an exchange?

No. The notes will not be listed on any securities exchange, and a market for them may never develop.

Does ERISA impose any limitations on purchases of the notes?

Yes. An employee benefit plan subject to the fiduciary responsibility provisions of the Employee Retirement Income Security Act of 1974 (commonly referred to as “ERISA”) or a plan that is subject to Section 4975 of the Internal Revenue Code of 1986, as amended, or the “Code,” including individual retirement accounts, individual retirement annuities or Keogh plans, or any entity the assets of which are deemed to be “plan assets” under the ERISA regulations, should not purchase, hold, or dispose of the notes unless that plan or entity has determined that its purchase, holding, or disposition of the notes will not constitute a prohibited transaction under ERISA or Section 4975 of the Code.

Any plan or entity purchasing the notes will be deemed to be representing that it has made such determination, or that a prohibited transaction class exemption (“PTCE”) or other statutory or administrative exemption exists and can be relied upon by such plan or entity. See the section entitled “ERISA Considerations.”

Are there any risks associated with your investment?

Yes. An investment in the notes is subject to risk. Please refer to the section entitled “Risk Factors” on the next page of this pricing supplement and page S-4 of the prospectus supplement.

RISK FACTORS

Your investment in the notes entails significant risks, many of which differ from those of a conventional security. Your decision to purchase the notes should be made only after carefully considering the risks of an investment in the notes, including those discussed below, with your advisors in light of your particular circumstances. The notes are not an appropriate investment for you if you are not knowledgeable about significant elements of the notes or financial matters in general.

It is possible that after the first four quarterly interest periods, you may not earn a return on your investment. The interest payable on the notes during any quarterly interest period, except for the first four quarterly interest periods, will depend on the amount by which the Spread Differential exceeds the Strike, determined as of the relevant interest determination date. As a result, you could receive little or no payment of interest on one or more of the interest payment dates (except for the first four interest payment dates) during the term of the notes. If the Spread Differential is constantly less than or equal to the Strike on each interest determination date over the term of the notes, even if the Spread Differential exceeds the Strike during other days during each quarterly interest period, your return on the notes would be limited to the first four quarterly fixed interest payments.

We have no control over various matters, including economic, financial and political events, which may affect the levels of CMS30 and CMS2, and thus the Spread Differential. In recent years, the Spread Differential has been volatile, and such volatility may be expected in the future. However, historical performance is not necessarily indicative of what may occur in the future. You should have a view as to U.S. Dollar Constant Maturity Swap Rates and related interest rate movements, and must be willing to forgo guaranteed market rates of interest for most of the term of the notes, before investing.

Your return is limited by the cap on the interest rate. The interest rate applicable to any interest period will not be greater than 15.00% per annum. Accordingly, if CMS30 exceeds CMS2 on any interest determination date during the term of the notes, your return on the notes may not reflect the full extent of that differential. Further, we may redeem the notes on any quarterly interest payment date on or after June 1, 2014. If we elect to redeem the notes, you will not receive any interest payments after the Early Redemption Date.

Your yield may be less than the yield on a conventional debt security of comparable maturity. The yield that you receive on the notes may be less than the return you would earn if you purchased a conventional debt security with the same maturity date. As a result, your investment in the notes may not reflect the full opportunity cost to you when you consider factors that affect the time value of money.

The notes are subject to our early redemption. We may redeem all of the notes on any interest payment date on or after June 1, 2014. You should expect to receive less than five business days' notice of that redemption, and if you intend to purchase the notes, you must be willing to have your notes redeemed as early as that date. We are generally more likely to elect to redeem the notes during periods when interest is accruing on the notes at a rate that is greater than that which we would pay on our traditional interest bearing debt securities having a maturity equal to the remaining term of the notes. In contrast, we are generally less likely to elect to redeem the notes during periods when interest is accruing on the notes at a rate that is less than that which we would pay on our traditional interest bearing debt securities having a maturity equal to the remaining term of the notes. In general, the more that CMS30 exceeds CMS2—that is, the higher the expected quarterly interest payments—the more likely it will be that we will elect to redeem the notes.

If we redeem the notes prior to the maturity date, you will receive for each unit of your notes a cash payment equal to the \$1,000 principal amount per unit, plus any accrued and unpaid interest to but excluding the Early Redemption Date (as defined below), and you will not receive the benefit of any future interest payments. In the case of an early redemption, you will not benefit from the fact that the Spread Differential is greater than the Strike after the Early Redemption Date and prior to the maturity date. You may be unable to reinvest your proceeds from the redemption in an investment with a return that is as high as the return on the notes would have been if they had not been redeemed.

[Table of Contents](#)

Payments on the notes are subject to our credit risk, and changes in our credit ratings are expected to affect the value of the notes. The notes are our senior unsecured debt securities. As a result, your receipt of all payments of interest and principal on the notes is dependent upon our ability to repay our obligations on the applicable payment date. This will be the case even if the difference between CMS30 and CMS2 increases after the pricing date. No assurance can be given as to what our financial condition will be at any time during the term of the notes or on the maturity date.

In addition, our credit ratings are an assessment by ratings agencies of our ability to pay our obligations. Consequently, our perceived creditworthiness and an actual or anticipated decrease in our credit ratings prior to the maturity date of the notes may adversely affect the market value of the notes. However, because your return on the notes depends upon factors in addition to our ability to pay our obligations, such as the difference between CMS30 and CMS2 during the term of the notes, an improvement in our credit ratings will not reduce the other investment risks related to the notes.

You must rely on your own evaluation of the merits of an investment linked to U.S. Dollar Constant Maturity Swap Rates. In the ordinary course of their businesses, our affiliates may have expressed views on expected movements in the U.S. Dollar Constant Maturity Swap Rates and related interest rates, and may do so in the future. These views or reports may be communicated to our clients and clients of our affiliates. However, these views are subject to change from time to time. Moreover, other professionals who deal in markets relating to U.S. Dollar Constant Maturity Swap Rates may at any time have significantly different views from those of our affiliates. For these reasons, you are encouraged to derive information concerning the U.S. Dollar Constant Maturity Swap Rates and related interest rates from multiple sources, and you should not rely on the views expressed by our affiliates.

Neither the offering of the notes nor any views which our affiliates from time to time may express in the ordinary course of their businesses constitutes a recommendation as to the merits of an investment in the notes.

In seeking to provide you with what we believe to be commercially reasonable terms for the notes, we have considered the costs of developing, hedging, and distributing the notes. In determining the economic terms of the notes, and consequently the potential return on the notes to you, a number of factors are taken into account. Among these factors are certain costs associated with creating, hedging, and offering the notes. In structuring the economic terms of the notes, we seek to provide you with what we believe to be commercially reasonable terms. The price, if any, at which you could sell your notes in a secondary market transaction is expected to be affected by the factors that we considered in setting the economic terms of the notes, namely the costs associated with the notes, and compensation for developing and hedging the notes. The quoted price of any of our affiliates for the notes could be higher or lower than the original offering price.

Assuming there is no change in the difference between CMS30 and CMS2 after the pricing date and no change in market conditions or any other relevant factors, the price, if any, at which the selling agent or another purchaser might be willing to purchase your notes in a secondary market transaction is expected to be lower than the original offering price. This is due to, among other things, the fact that the original offering price includes, and secondary market prices are likely to exclude, the developing and hedging costs associated with the notes.

We cannot assure you that a trading market for your notes will ever develop or be maintained. We will not list the notes on any securities exchange. We cannot predict how the notes will trade in any secondary market or whether that market will be liquid or illiquid.

The development of a trading market for the notes will depend on our financial performance and other factors, including changes in levels of the Spread Differential. The number of potential buyers of your notes in any secondary market may be limited. We anticipate that the selling agent will act as a market-maker for the notes, but it is not required to do so. The selling agent may discontinue its market-making activities as to the notes at any time. To the extent that the selling agent engages in any market-making activities, it may bid for or offer the notes. Any price at which the selling agent may bid for, offer, purchase, or sell any notes may differ from the values determined by pricing models that it may use, whether as a result of dealer discounts, mark-ups, or other transaction costs. These bids, offers, or completed transactions may affect the prices, if any, at which the notes might otherwise trade in the market.

Table of Contents

In addition, if at any time the selling agent were to cease acting as a market-maker as to the notes, it is likely that there would be significantly less liquidity in the secondary market. In such a case, the price at which the notes could be sold likely would be lower than if an active market existed.

If you attempt to sell the notes prior to maturity, their market value, if any, will be affected by various factors that interrelate in complex ways, and their market value may be less than the principal amount of the notes. Unlike savings accounts, certificates of deposit, and other similar investment products, you have no right to have your notes redeemed prior to maturity. If you wish to liquidate your investment in the notes prior to maturity, your only option would be to sell them. At that time, there may be an illiquid market for your notes or no market at all. Even if you were able to sell your notes, there are many factors outside of our control that may affect their market value, some of which, but not all, are stated below. Some of these factors are interrelated in complex ways. As a result, the effect of any one factor may be offset or magnified by the effect of another factor. The following paragraphs describe the expected impact on the market value of the notes from a change in a specific factor, assuming all other conditions remain constant.

- **The difference between CMS30 and CMS2 is expected to affect the market value of the notes.** We expect that the market value of the notes will depend substantially on the amount by which CMS30 exceeds CMS2, and expectations of the amount by which CMS30 will exceed CMS2 in the future, if at all. In general, the value of the notes will increase when the difference between CMS30 and CMS2 increases, and the value of the notes will decrease when the difference between CMS30 and CMS2 decreases. The levels of the CMS30 and CMS2 may change at rates that are different from one another. If you sell your notes when the annual interest payable on the notes is less than, or expected to be less than, market interest rates (as compared to traditional interest-bearing debt securities), you may receive less than the principal amount that would be payable at maturity. Although long-term interest rates directionally follow short-term interest rates, movements in long-term interest rates generally tend to be smaller than movements in short-term interest rates. As such, when short-term interest rates rise, the difference between CMS30 and CMS2 tends to narrow (the curve of the spread flattens); conversely, when short-term interest rates fall, the spread widens (the curve of the spread becomes steeper). Consequently, after the first four quarterly interest periods, the annualized rate of interest payable on the notes and the market value of the notes may be more likely to decrease in an increasing interest rate environment than in a declining interest rate environment. In addition, because the interest rate payable on the notes is capped at 15.00% per annum after the first four quarterly interest periods, we do not expect that the notes will trade in any secondary market at a price that is greater than a price that reflects the cap.
- **Changes in the levels of interest rates may affect the market value of the notes.** The level of interest rates in the United States may affect the U.S. economy and, in turn, the magnitude of the difference between CMS30 and CMS2. Changes in prevailing interest rates may decrease the difference between CMS30 and CMS2 relative to previous periods, which would decrease the interest rate on the notes after the first four quarterly interest periods. This, in turn, may decrease the market value of the notes. Further, the notes are subject to early redemption at our option beginning in June 2014 and an interest rate cap of 15.00% per annum after the first four quarterly interest periods, each of which will limit the potential upside to investors when CMS30 exceeds CMS2. As a result, we anticipate that the potential for the notes to trade above their par value in the secondary market, if any, is extremely limited—likely only during the first year of the term of the notes, and in a declining interest rate environment.
- **Volatility of the difference between CMS30 and CMS2.** Volatility is the term used to describe the size and frequency of market fluctuations. During recent periods, the difference between CMS30 and CMS2 has had periods of volatility, and this volatility may vary during the term of the notes. In addition, an unsettled international environment and related uncertainties may result in greater market volatility, which may continue over the term of the notes. Increases or decreases in the volatility of the difference between CMS30 and CMS2 may have an adverse impact on the market value of the notes.
- **Economic and Other Conditions Generally.** Interest payable on the notes after the first four quarterly interest periods is expected to be correlated to the difference between long-term interest rates (as represented by CMS30) and short-term interest rates (as represented by CMS2). Prevailing interest rates may be influenced by a number of factors, including general economic

Table of Contents

conditions in the United States, U.S. monetary and fiscal policies, inflation, and other financial, political, regulatory, and judicial events. These factors interrelate in complex ways, and may disproportionately affect short-term interest rates relative to long-term interest rates, thereby potentially lowering the difference between CMS30 and CMS2, and consequently adversely affecting the market value of your notes.

- **Time to Maturity.** We anticipate that the notes may have a market value that may be different from that which would be expected based on the levels of interest rates and the difference between CMS30 and CMS2. This difference will reflect a time premium due to expectations concerning the difference between CMS30 and CMS2 during the period before the maturity date. In general, as the time remaining to maturity decreases, the value of notes will approach a value that reflects the remaining interest payments on the notes based on the then-current difference between CMS30 and CMS2.

Our trading and hedging activities may create conflicts of interest with you. We or one or more of our affiliates, including the selling agent, may engage in trading activities related to one or both of CMS30 and CMS2 that are not for your account or on your behalf. We or one or more of our affiliates, including the selling agent, also may issue, or our affiliates may underwrite, other financial instruments with returns linked to CMS30 and/or CMS2. We expect to enter into arrangements to hedge the market risks associated with our obligation to pay the amounts due under the notes. We may seek competitive terms in entering into the hedging arrangements for the notes, but are not required to do so, and we may enter into such hedging arrangements with one of our subsidiaries or affiliates. Such hedging activity is expected to result in a profit to those engaging in the hedging activity, which could be more or less than initially expected, but which could also result in a loss for the hedging counterparty. These trading and hedging activities may present a conflict of interest between your interest in the notes and the interests we and our affiliates may have in our proprietary accounts, in facilitating transactions for our other customers, and in accounts under our management.

There may be potential conflicts of interest involving the calculation agent. We have the right to appoint and remove the calculation agent. Our subsidiary, MLCS, will be the calculation agent for the notes and, as such, will determine the amount of interest to be paid on the notes. Under some circumstances, these duties could result in a conflict of interest between MLCS's status as our subsidiary and its responsibilities as calculation agent. These conflicts could occur, for instance, in connection with judgments that it would be required to make if one or both of CMS30 and CMS2 are unavailable. See the section entitled "Description of the Notes—Unavailability of CMS30 and/or CMS2." The calculation agent will be required to carry out its duties in good faith and using its reasonable judgment. However, because we expect to control the calculation agent, potential conflicts of interest could arise.

USE OF PROCEEDS

We will use the net proceeds we receive from the sale of the notes for the purposes described in the accompanying prospectus under “Use of Proceeds.” In addition, we expect that we or our affiliates will use a portion of the net proceeds to hedge our obligations under the notes.

DESCRIPTION OF THE NOTES

General

The notes are part of a series of medium-term notes entitled “Medium-Term Notes, Series L” issued under the Senior Indenture, as amended and supplemented from time to time. The Senior Indenture is described more fully in the accompanying prospectus supplement and prospectus. The following description of the notes supplements the description of the general terms and provisions of the notes and debt securities set forth under the headings “Description of the Notes” in the prospectus supplement and “Description of Debt Securities” in the prospectus. These documents should be read in connection with this pricing supplement.

The notes are issued in denominations of whole units, and each unit will have a principal amount of \$1,000. Unless earlier redeemed, the notes will mature on June , 2030.

We may redeem all of the notes on any quarterly interest payment date on or after June , 2014. Prior to maturity, the notes are not repayable at your option. The notes are not subject to any sinking fund.

The notes will be issued in book-entry form only.

Interest

Each interest payment due for a quarterly interest period will be paid on March , June , September , and December of each year, beginning September , 2010, and on the maturity date.

Each quarterly interest period (other than the first quarterly interest period from, and including, the original date of issuance of the notes to, but excluding, September , 2010) will commence on, and will include, an interest payment date, and will extend to, but will exclude, the next succeeding interest payment date or the maturity date, as applicable. If any interest payment date, including the maturity date of the notes, falls on a day that is not a business day, no adjustment will be made to the length of the corresponding quarterly interest period; however, we will make the required payment on the next business day and no additional interest will accrue in respect of the payment made on the next business day.

A “business day” means any day other than a day on which banking institutions in New York, New York are authorized or required by law, regulation, or executive order to close or a day on which transactions in U.S. dollars are not conducted.

The interest rate for each interest period after the first four quarterly interest periods will be reset on the first day of that interest period, which we refer to as the “interest reset date.” The calculation agent will determine the applicable interest rate for each interest period on the interest determination date. Once determined by the calculation agent, the applicable interest rate for each quarterly interest period will apply from and including the interest reset date, through, but excluding, the next interest reset date (or the maturity date, as applicable).

Interest is computed on the basis of a 360-day year of twelve 30-day months. For as long as the notes are held in book-entry only form, the record date for each payment of interest will be the business day prior to the payment date. If the notes are issued at any time in a form that is other than book-entry only, the regular record date for an interest payment date will be the last day of the calendar month preceding the interest payment date.

For each quarterly interest period, the calculation agent will determine the applicable annualized interest rate as follows:

- (a) From and including June , 2010 to but excluding June , 2011, interest on the notes will accrue at the rate of 15.00% per annum.

Table of Contents

(b) During each subsequent quarterly interest period beginning on June , 2011, interest will accrue at a rate per annum equal to:

$$4 \times (\text{CMS30} - \text{CMS2} - \text{Strike})$$

In no event will the interest rate applicable to any interest period be greater than 15.00% per annum or less than 0.00% per annum.

The Strike will be 0.25%.

“CMS30” means the 30-year U.S. Dollar Constant Maturity Swap Rate, expressed as a percentage, as quoted on the Reuters Screen ISDAFIX3 Page, at 11:00 a.m., New York City time, on the applicable interest determination date.

“CMS2” means the 2-year U.S. Dollar Constant Maturity Swap Rate, expressed as a percentage, as quoted on the Reuters Screen ISDAFIX3 Page, at 11:00 a.m., New York City time, on the applicable interest determination date.

The “interest determination date” for each quarterly interest period after the first four quarterly interest periods will be the second U.S. Government Securities Business Day prior to the beginning of the applicable quarterly interest period.

A “U.S. Government Securities Business Day” means any day, other than a Saturday, Sunday, or a day on which the Securities Industry and Financial Markets Association (or any successor thereto) recommends that the fixed income departments of its members be closed for the entire day for purposes of trading in U.S. government securities.

Payment at Maturity

Unless earlier redeemed, on the maturity date, you will be paid the principal amount of the notes and any accrued and unpaid interest on the notes, subject to our credit risk. See “Risk Factors—Payments on the notes are subject to our credit risk, and changes in our credit ratings are expected to affect the value of the notes” above.

The notes are principal protected at maturity. Regardless of the amounts of the interest payable during each interest period over the term of the notes, you will receive your principal amount at maturity, assuming that we are otherwise able to pay our debts on the maturity date.

Early Redemption at Our Option

We may redeem all of the notes on any interest payment date on or after June , 2014 (each, an “Early Redemption Date”). We must provide the trustee with notice of redemption at least five business days prior to the applicable Early Redemption Date. The trustee will deliver the notice to The Depository Trust Company (“DTC”), as the record holder of the notes. Beneficial holders of the notes will receive such notice from the direct or indirect DTC participant through which they hold their notes. Accordingly, you should expect to receive less than five business days’ notice of an early redemption.

If we redeem the notes prior to the maturity date, you will receive for each unit of your notes a cash payment equal to the \$1,000 principal amount per unit, plus any accrued and unpaid interest to but excluding the Early Redemption Date, and you will not receive the benefit of any future interest payments.

Unavailability of CMS30 and/or CMS2

If, on any interest determination date, CMS30 and/or CMS2 are not quoted on the Reuters Screen ISDAFIX3 Page, or any page substituted for that page, then CMS30 and CMS2 will be a percentage determined on the basis of the mid-market semi-annual swap rate quotations provided by three banks chosen by the calculation agent (which may include one of our affiliates) at approximately 11:00 a.m., New York City time, on that date. For this purpose, the semi-annual swap rate means the mean of the

Table of Contents

bid and offered rates for the semi-annual fixed leg, calculated on the basis of a 360-day year consisting of twelve 30-day months, of a fixed-for-floating U.S. dollar interest rate swap transaction with a term equal to 30 years or two years, as applicable, commencing on the applicable date and in a representative amount with an acknowledged dealer of good credit in the swap market, where the floating leg, calculated on the actual number of days in a 360-day year, is equivalent to USD-LIBOR-BBA, as quoted on the Reuters Screen LIBOR01 Page at 11:00 a.m., New York City time, with a designated maturity of three months. The calculation agent will request the principal New York City office of each of the three banks chosen by it to provide a quotation of its rate. If at least three quotations are provided, the rate for the relevant interest determination date will be the arithmetic mean of the quotations. If two quotations are provided, the rate for the relevant interest determination date will be the arithmetic mean of the two quotations. If only one quotation is provided, the rate for the relevant interest determination date will equal that one quotation. If no quotations are available, then CMS30 and/or CMS2 will be the rates the calculation agent, in its sole discretion, determines to be fair and reasonable under the circumstances at approximately 11:00 a.m., New York City time, on the relevant interest determination date.

Role of the Calculation Agent

The calculation agent has the sole discretion to make all determinations regarding the notes, including determinations regarding CMS30, CMS2, the amount of each interest payment, U.S. Government Securities Business Days, and business days. Absent manifest error, all determinations of the calculation agent will be final and binding on you and us, without any liability on the part of the calculation agent.

We have initially appointed our subsidiary, MLCS, as the calculation agent, but we may change the calculation agent at any time without notifying you.

Same-Day Settlement and Payment

The notes will be delivered in book-entry form only through DTC against payment by purchasers of the notes in immediately available funds. We will make payments of the principal amount and each interest payment in immediately available funds so long as the notes are maintained in book-entry form.

Events of Default and Rights of Acceleration

If an event of default (as defined in the Senior Indenture) occurs and is continuing, holders of the notes may accelerate the maturity of the notes, as described under “Description of Debt Securities—Events of Default and Rights of Acceleration” in the prospectus. Upon an event of default, you will be entitled to receive only your principal amount, and accrued and unpaid interest, if any, through the acceleration date. In case of an event of default, the notes will not bear a default interest rate. If a bankruptcy proceeding is commenced in respect of us, your claim may be limited, under the U.S. Bankruptcy Code, to the original public offering price of the notes.

Listing

The notes will not be listed on any securities exchange.

[Table of Contents](#)

**THE 30-YEAR U.S. DOLLAR CONSTANT MATURITY SWAP RATE (CMS30) AND
THE 2-YEAR U.S. DOLLAR CONSTANT MATURITY SWAP RATE (CMS2)**

General

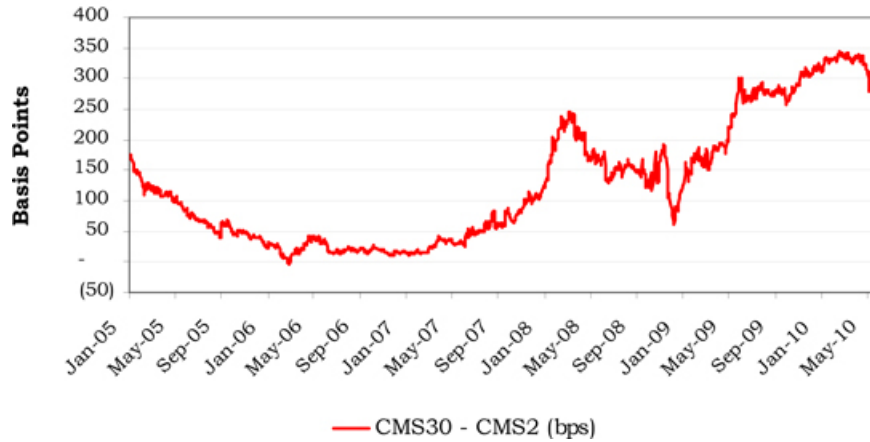
CMS30 and CMS2 are “constant maturity swap rates” that measure the fixed rate of interest payable on a hypothetical fixed-for-floating U.S. dollar interest rate swap transaction with a maturity of 30 years and two years, respectively. In such a hypothetical swap transaction, the fixed rate of interest, payable semi-annually on the basis of a 360-day year consisting of twelve 30-day months, is exchangeable for a floating 3-month LIBOR-based payment stream that is payable quarterly on the basis of the actual number of days elapsed during a quarterly period in a 360-day year. “LIBOR” is the London interbank offered rate and is a common rate of interest used in the swaps industry.

Historical Levels of CMS30 and CMS2

The following table sets forth the historical month-end spread between CMS30 and CMS2 from January 2005 through May 2010. The following graph sets forth the historical daily spread (expressed in basis points, where 100 basis points equals 1%) between CMS30 and CMS2 over the same time period. This data is not intended to be indicative of the future performance of the difference between CMS30 and CMS2 or what the value of or return on the notes may be. Any historical upward or downward trend in the difference between CMS30 and CMS2 during any period set forth below is not an indication that such difference is more or less likely to increase or decrease in value at any time over the term of the notes or that these represent what the difference would have been on any hypothetical interest determination date. Further, investors in the notes may not realize a return consistent with the historical data presented even if equally favorable historical spreads continue during the term of the notes, since the notes are subject to early redemption. See “Risk Factors—The notes are subject to our early redemption” above.

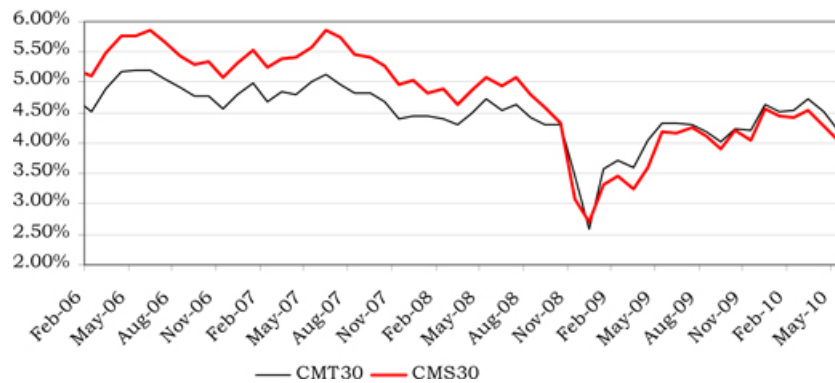
	<u>2005</u>	<u>2006</u>	<u>2007</u>	<u>2008</u>	<u>2009</u>	<u>2010</u>
January	1.3560%	0.2620%	0.1930%	1.8360%	1.7670%	3.2950%
February	1.1640%	0.0060%	0.1930%	2.3080%	1.7620%	3.3520%
March	1.0750%	0.2280%	0.3660%	2.1780%	1.8190%	3.3210%
April	0.9860%	0.4260%	0.3620%	1.6760%	2.1030%	3.1300%
May	0.8270%	0.3610%	0.3000%	1.6500%	2.8380%	2.1850%
June	0.7090%	0.2100%	0.4480%	1.3930%	2.6340%	
July	0.5830%	0.2280%	0.6630%	1.5420%	2.7440%	
August	0.3900%	0.1880%	0.6030%	1.4520%	2.7670%	
September	0.4510%	0.1920%	0.8180%	1.2330%	2.6190%	
October	0.4640%	0.1910%	0.8130%	1.6190%	2.9230%	
November	0.4030%	0.1300%	1.0000%	0.9280%	3.0370%	
December	0.2220%	0.1490%	1.2070%	1.2510%	3.1040%	

Spread of Swap Rates

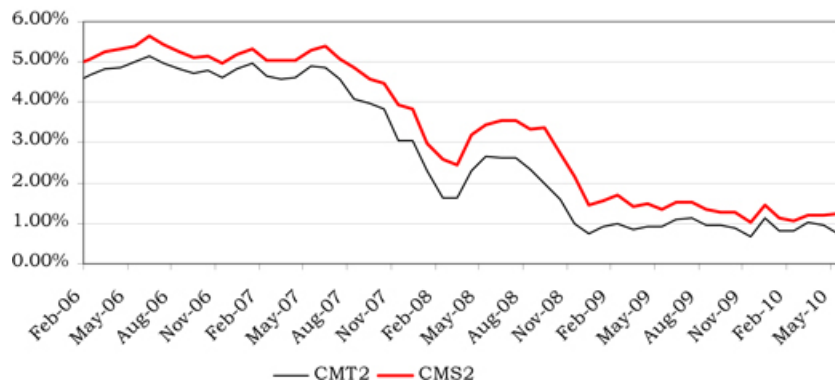


Movements in CMS30 and CMS2 have historically been correlated to some extent, but not exactly, to movements in the 30-year Constant Maturity Treasury Rate and 2-year Constant Maturity Treasury Rate, respectively. The first graph below reflects the month-end CMS30 relative to the month-end 30-year Constant Maturity Treasury Rate during the period from February 2006 through May 2010 (the 30-year Constant Maturity Treasury Rate was discontinued on February 18, 2002 and reintroduced on February 9, 2006); the second graph reflects the month-end CMS2 relative to the month-end 2-year Constant Maturity Treasury Rate during the same period.

UST-Yield & USD Swap-Yield



UST-Yield & USD Swap-Yield



Interest payable on the notes after the first four quarterly interest periods will be imperfectly correlated to the difference between long-term interest rates (as measured by CMS30) and short-term interest rates (as measured by CMS2). Although long-term interest rates directionally follow short-term interest rates, movements in long-term interest rates generally tend to be smaller than movements in short-term interest rates. As such, when short-term interest rates rise, the difference between CMS30 and CMS2 tends to narrow (the curve of the spread flattens); conversely, when short-term interest rates fall, the spread widens (the curve of the spread becomes steeper). After the first four quarterly interest periods, interest payable on the notes will be greater the wider the spread between CMS30 and CMS2 (assuming the Spread Differential is greater than the Strike), and the steeper the curve of the spread, as of each interest determination date.

The difference between long-term interest rates and short-term interest rates is influenced by a number of factors, including (but not limited to) monetary policy, fiscal policy, inflation, and fundamental demand conditions. These factors interrelate in complex, and sometimes ambiguous, ways. Any factor which reduces the supply of or increases the demand for money available for borrowing will generally disproportionately affect short-term interest rates relative to long-term interest rates, thereby potentially lowering the difference between CMS30 and CMS2. For example, monetary policy tightening by the Federal Reserve Bank through open market operations initially generates high nominal short-term interest rates, while long-term rates typically rise by a smaller amount. As a result, the difference between short-term interest rates and long-term interest rates typically decreases when contractionary monetary policy shocks occur.

SUPPLEMENTAL PLAN OF DISTRIBUTION

Our broker-dealer subsidiary, MLPF&S, will act as our selling agent in connection with the offering of the notes. The selling agent is a party to the Distribution Agreement described in the “Supplemental Plan of Distribution” on page S-12 of the accompanying prospectus supplement.

The notes will be offered at varying prices related to prevailing market prices. The purchase price of the notes to the selling agent will be the price set forth on the cover page of this pricing supplement. You must have an account with the selling agent to purchase the notes.

The selling agent is a member of the Financial Industry Regulatory Authority, Inc. (formerly the National Association of Securities Dealers, Inc. (the “NASD”)). Accordingly, offerings of the notes will conform to the requirements of NASD Rule 2720.

The selling agent is not acting as your fiduciary or advisor, and you should not rely upon any communication from the selling agent in connection with the notes as investment advice or a recommendation to purchase notes. You should make your own investment decision regarding the notes after consulting with your legal, tax, and other advisors.

We may deliver the notes against payment therefor in New York, New York on a date that is greater than three business days following the pricing date. Under Rule 15c6-1 of the Securities Exchange Act of 1934, trades in the secondary market generally are required to settle in three business days, unless the parties to any such trade expressly agree otherwise. Accordingly, if the initial settlement of the notes occurs more than three business days from the pricing date, purchasers who wish to trade the notes more than three business days prior to the original issue date will be required to specify alternative settlement arrangements to prevent a failed settlement. See “Supplemental Plan of Distribution” on page S-12 of the accompanying prospectus supplement.”

If you place an order to purchase the notes, you are consenting to MLPF&S acting as a principal in effecting the transaction for your account. MLPF&S is acting as an underwriter in connection with this offering and will receive underwriting compensation from us.

The selling agent and any of our other broker-dealer affiliates, may use this pricing supplement, and the accompanying prospectus supplement and prospectus for offers and sales in secondary market transactions and market-making transactions in the notes. However, they are not obligated to engage in such secondary market transactions and/or market-making transactions. The selling agent may act as principal or agent in these transactions, and any such sales will be made at prices related to prevailing market prices at the time of the sale.

U.S. FEDERAL INCOME TAX SUMMARY

The following summary of the material U.S. federal income tax considerations of the acquisition, ownership, and disposition of the notes is based upon the advice of Morrison & Foerster LLP, our tax counsel. The following discussion is not exhaustive of all possible tax considerations. This summary is based upon the Code, regulations promulgated under the Code by the U.S. Treasury Department (“Treasury”) (including proposed and temporary regulations), rulings, current administrative interpretations and official pronouncements of the Internal Revenue Service (“IRS”), and judicial decisions, all as currently in effect and all of which are subject to differing interpretations or to change, possibly with retroactive effect. No assurance can be given that the IRS would not assert, or that a court would not sustain, a position contrary to any of the tax consequences described below.

This summary is for general information only, and does not purport to discuss all aspects of U.S. federal income taxation that may be important to a particular holder in light of its investment or tax circumstances or to holders subject to special tax rules, such as partnerships, subchapter S corporations, or other pass-through entities, banks, financial institutions, tax-exempt entities, insurance companies, regulated investment companies, real estate investment trusts, trusts and estates, dealers in securities or currencies, traders in securities that have elected to use the mark-to-market method of accounting for their securities, persons holding notes as part of an integrated investment, including a “straddle,” “hedge,” “constructive sale,” or “conversion transaction,” persons (other than Non-U.S. Holders, as defined below) whose functional currency for tax purposes is not the U.S. dollar, persons holding notes in a tax-deferred or tax-advantaged account, and persons subject to the alternative minimum tax provisions of the Code. This summary does not include any description of the tax laws of any state or local governments, or of any foreign government, that may be applicable to a particular holder.

This summary is directed solely to holders that, except as otherwise specifically noted, will purchase the notes upon original issuance and will hold the notes as capital assets within the meaning of Section 1221 of the Code, which generally means property held for investment. This summary assumes that the issue price of the notes, as determined for U.S. federal income tax purposes, equals the principal amount thereof.

You should consult your own tax advisor concerning the U.S. federal income tax consequences to you of acquiring, owning, and disposing of notes, as well as any tax consequences arising under the laws of any state, local, foreign, or other tax jurisdiction and the possible effects of changes in U.S. federal or other tax laws.

As used in this pricing supplement, the term “U.S. Holder” means a beneficial owner of a note that is for U.S. federal income tax purposes:

- a citizen or resident of the United States;
- a corporation (including an entity treated as a corporation for U.S. federal income tax purposes) created or organized in or under the laws of the United States or of any state of the United States or the District of Columbia;
- an estate the income of which is subject to U.S. federal income taxation regardless of its source; or
- any trust if a court within the United States is able to exercise primary supervision over the administration of the trust and one or more United States persons have the authority to control all substantial decisions of the trust.

Notwithstanding the preceding paragraph, to the extent provided in Treasury regulations, some trusts in existence on August 20, 1996, and treated as United States persons prior to that date, that elect to continue to be treated as United States persons also are U.S. Holders. As used in this pricing supplement, the term “Non-U.S. Holder” means a holder that is not a U.S. Holder.

If an entity or arrangement treated as a partnership for U.S. federal income tax purposes holds a note, the U.S. federal income tax treatment of a partner generally will depend upon the status of the

Table of Contents

partner and the activities of the partnership and, accordingly, this summary does not apply to partnerships. A partner of a partnership holding a note should consult its own tax advisor regarding the U.S. federal income tax consequences to the partner of the acquisition, ownership, and disposition by the partnership of a note.

Tax Characterization of the Notes

There are no statutory provisions, regulations, published rulings, or judicial decisions addressing the characterization, for U.S. federal income tax purposes, of the notes or other instruments with terms substantially the same as the notes. However, although the matter is not free from doubt, under current law, each note should be treated as a debt instrument for U.S. federal income tax purposes and this summary assumes such treatment is proper and will be respected. We currently intend to treat the notes as debt instruments for U.S. federal income tax purposes and, where required, intend to file information returns with the IRS in accordance with such treatment, in the absence of any change or clarification in the law, by regulation or otherwise, requiring a different characterization of the notes. You should be aware, however, that the IRS is not bound by our characterization of the notes as indebtedness and the IRS could possibly take a different position as to the proper characterization of the notes for U.S. federal income tax purposes. If the notes are not in fact treated as debt instruments for U.S. federal income tax purposes, then the U.S. federal income tax treatment of the purchase, ownership, and disposition of the notes could differ materially from the treatment discussed below. For example, the timing and character of income, gain, or loss recognized in respect of the notes could differ materially from the timing and character of income, gain, or loss recognized in respect of the notes had the notes in fact been treated as debt instruments for U.S. federal income tax purposes.

U.S. Holders – Income Tax Considerations

Interest and Original Issue Discount. We intend to take the position that the notes will be treated as “contingent payment debt instruments” for U.S. federal income tax purposes subject to taxation under the “noncontingent bond method,” and the balance of this discussion assumes that this characterization is proper and will be respected. Under this characterization, the notes generally will be subject to the Treasury regulations governing contingent payment debt instruments. Under those regulations, a U.S. Holder will be required to report original issue discount (“OID”) or interest income based on a “comparable yield” and a “projected payment schedule,” both as described below, established by us for determining interest accruals and adjustments with respect to a note. A U.S. Holder which does not use the “comparable yield” and follow the “projected payment schedule” to calculate its OID and interest income on a note must timely disclose and justify the use of other estimates to the IRS.

A “comparable yield” with respect to a note generally is the yield at which we could issue a fixed-rate debt instrument with terms similar to those of the note (taking into account for this purpose the level of subordination, term, timing of payments, and general market conditions, but ignoring any adjustments for liquidity or the riskiness of the contingencies with respect to the note). Notwithstanding the foregoing, a comparable yield must not be less than the applicable U.S. federal rate based on the overall maturity of the note.

A “projected payment schedule” with respect to a note generally is a series of projected payments, the amount and timing of which would produce a yield to maturity on that note equal to the comparable yield. This projected payment schedule will consist of the principal amount, the fixed payments for the initial four quarterly interest periods and a projection for tax purposes of each “contingent payment,” i.e., each interest payment other than the fixed payments for the initial four quarterly interest periods.

Based on the comparable yield and the projected payment schedule of the notes, a U.S. Holder of a note (regardless of accounting method) generally will be required to accrue as OID the sum of the daily portions of interest on the note for each day in the taxable year on which the holder held the note, adjusted upward or downward to reflect the difference, if any, between the actual and projected amount of any contingent payments on the note, as set forth below. The daily portions of interest for a note are determined by allocating to each day in an accrual period the ratable portion of interest on the note that accrues in the accrual period. The amount of interest on the note that accrues in an accrual period is the product of the comparable yield on the note (adjusted to reflect the length of the accrual period) and the adjusted issue price of the note at the beginning of the accrual period. The adjusted issue price of a note

Table of Contents

at the beginning of the first accrual period will equal its issue price. The issue price of each note in an issue of notes is the first price at which a substantial amount of those notes has been sold (including any premium paid for those notes and ignoring sales to bond houses, brokers, or similar persons or organizations acting in the capacity of underwriters, placement agents, or wholesalers). For any subsequent accrual period, the adjusted issue price will be (1) the sum of the issue price of the note and any interest previously accrued on the note by a holder (without regard to any positive or negative adjustments, described below) minus (2) the amount of any projected payments on the note for previous accrual periods. A U.S. Holder of a note generally will be required to include in income OID in excess of actual cash payments received for certain taxable years.

A U.S. Holder will be required to recognize interest income equal to the amount of any positive adjustment for a note for the taxable year in which a contingent payment is paid (including a payment of interest at maturity). A positive adjustment is the excess of actual payments in respect of contingent payments over the projected amount of contingent payments. A U.S. Holder also will be required to account for any "negative adjustment" for a taxable year in which a contingent payment is paid. A negative adjustment is the excess of the projected amounts of contingent payments over actual payments in respect of the contingent payments. A net negative adjustment is the amount by which total negative adjustments in a taxable year exceed total positive adjustments in such taxable year. A net negative adjustment (1) will first reduce the amount of interest for the note that a U.S. Holder would otherwise be required to include in income in the taxable year, and (2) to the extent of any excess, will result in an ordinary loss equal to that portion of the excess as does not exceed the excess of (A) the amount of all previous interest inclusions under the note over (B) the total amount of the U.S. Holder's net negative adjustments treated as ordinary loss on the note in prior taxable years. A net negative adjustment is not subject to the 2% floor limitation imposed on miscellaneous deductions under Section 67 of the Code. Any net negative adjustment in excess of the amounts described above in (1) and (2) will be carried forward to offset future interest income on the note or to reduce the amount realized on a sale, exchange, or retirement of the note and, in the case of a payment at maturity, should result in a capital loss. The deductibility of capital losses by a U.S. Holder is subject to limitations.

If a U.S. Holder purchases the notes for an amount that differs from the notes' adjusted issue price at the time of the purchase, the holder must determine the extent to which the difference between the price paid for the notes and their adjusted price is attributable to a change in expectations as to the projected payment schedule, a change in interest rates, or both, and allocate the difference accordingly.

If a U.S. Holder purchases the notes for an amount that is less than the adjusted issue price of the notes, such holder must (a) make positive adjustments increasing the amount of interest that the holder would otherwise accrue and include in income each year to the extent of amounts allocated to a change in interest rates under the preceding paragraph and (b) make positive adjustments increasing the amount of ordinary income (or decreasing the amount of ordinary loss) that the holder would otherwise recognize on the maturity of the notes to the extent of amounts allocated to a change in expectations as to the projected payment schedule under the preceding paragraph. If a U.S. Holder purchases the notes for an amount that is greater than the adjusted issue price of the notes, the holder must (a) make negative adjustments decreasing the amount of interest that the holder would otherwise accrue and include in income each year to the extent of amounts allocated to a change in interest rates under the preceding paragraph and (b) make negative adjustments decreasing the amount of ordinary income (or increasing the amount of ordinary loss) that the holder would otherwise recognize on the maturity of the notes to the extent of amounts allocated to a change in expectations as to the projected payment schedule under the preceding paragraph. Adjustments allocated to the interest amount are not made until the date the daily portion of interest accrues.

If a contingent payment becomes fixed (within the meaning of applicable Treasury regulations) more than six months before its due date, a positive or negative adjustment, as appropriate, is made to reflect the difference between the present value of the amount that is fixed and the present value of the projected amount. The present value of each amount is determined by discounting the amount from the date the payment is due to the date the payment becomes fixed, using a discount rate equal to the comparable yield. If all contingent payments on the notes become fixed, substantially contemporaneously, applicable Treasury regulations provide that, with regard to contingent payments that become fixed on a day that is more than six months before their due date, U.S. Holders should take into account positive or negative adjustments in respect of such contingent payments over the period to

[Table of Contents](#)

which they relate in a reasonable manner. U.S. Holders should consult their tax advisors as to what would be a “reasonable manner” in their particular situation.

The following table assumes an expected issue date of June 28, 2010 and maturity date of June 28, 2030 for the notes and is based upon a hypothetical projected payment schedule and a hypothetical comparable yield equal to 5.70% per annum (compounded semi-annually), that we established for the notes, and shows the amounts of ordinary income from a note that an initial U.S. Holder that holds the note until maturity and pays taxes on a calendar year basis should be required to report each calendar year. The following tables are for illustrative purposes only. The actual tables will be completed on the pricing date and included in the final pricing supplement.

Accrual Period	Interest Deemed to Accrue During Accrual Period (per \$1,000 principal amount per unit of the Notes)	Total Interest Deemed to Have Accrued from Original Issue Date (per \$1,000 principal amount per unit of the Notes)
June 28, 2010 through December 31, 2010	\$29.41	\$29.41
January 1, 2011 through December 31, 2011	\$52.94	\$82.34
January 1, 2012 through December 31, 2012	\$51.74	\$134.08
January 1, 2013 through December 31, 2013	\$51.92	\$186.01
January 1, 2014 through December 31, 2014	\$52.09	\$238.10
January 1, 2015 through December 31, 2015	\$52.29	\$290.39
January 1, 2016 through December 31, 2016	\$52.49	\$342.89
January 1, 2017 through December 31, 2017	\$52.70	\$395.59
January 1, 2018 through December 31, 2018	\$52.92	\$448.52
January 1, 2019 through December 31, 2019	\$53.16	\$501.68
January 1, 2020 through December 31, 2020	\$53.42	\$555.10
January 1, 2021 through December 31, 2021	\$53.69	\$608.80
January 1, 2022 through December 31, 2022	\$53.97	\$662.77
January 1, 2023 through December 31, 2023	\$54.27	\$717.04
January 1, 2024 through December 31, 2024	\$54.59	\$771.62
January 1, 2025 through December 31, 2025	\$54.92	\$826.54
January 1, 2026 through December 31, 2026	\$55.28	\$881.82
January 1, 2027 through December 31, 2027	\$55.65	\$937.46
January 1, 2028 through December 31, 2028	\$56.05	\$993.51
January 1, 2029 through December 31, 2029	\$56.45	\$1,049.96
January 1, 2030 through June 28, 2030	\$27.24	\$1,077.20

Table of Contents

In addition, we have determined the hypothetical projected payment schedule for the notes as follows:

<u>Taxable Year</u>	<u>Payment on March 28</u>	<u>Payment on June 28</u>	<u>Payment on September 28</u>	<u>Payment on December 28</u>
2010			\$37.50	\$37.50
2011	\$37.50	\$37.50	\$12.20	\$12.20
2012	\$12.20	\$12.20	\$12.20	\$12.20
2013	\$12.20	\$12.20	\$12.20	\$12.20
2014	\$12.20	\$12.20	\$12.20	\$12.20
2015	\$12.20	\$12.20	\$12.20	\$12.20
2016	\$12.20	\$12.20	\$12.20	\$12.20
2017	\$12.20	\$12.20	\$12.20	\$12.20
2018	\$12.20	\$12.20	\$12.20	\$12.20
2019	\$12.20	\$12.20	\$12.20	\$12.20
2020	\$12.20	\$12.20	\$12.20	\$12.20
2021	\$12.20	\$12.20	\$12.20	\$12.20
2022	\$12.20	\$12.20	\$12.20	\$12.20
2023	\$12.20	\$12.20	\$12.20	\$12.20
2024	\$12.20	\$12.20	\$12.20	\$12.20
2025	\$12.20	\$12.20	\$12.20	\$12.20
2026	\$12.20	\$12.20	\$12.20	\$12.20
2027	\$12.20	\$12.20	\$12.20	\$12.20
2028	\$12.20	\$12.20	\$12.20	\$12.20
2029	\$12.20	\$12.20	\$12.20	\$12.20
2030	\$12.20	\$1,012.20		

You should be aware that these amounts are not calculated or provided for any purposes other than the determination of a U.S. Holder's interest accruals and adjustments with respect to the notes for U.S. federal income tax purposes. By providing the table above and the projected payment schedule, we make no representations regarding the actual amounts of interest payments on the notes after the first four quarterly interest periods.

Sale, Exchange, or Retirement. Upon a sale, exchange, or retirement of a note prior to maturity, a U.S. Holder generally will recognize taxable gain or loss equal to the difference between the amount realized on the sale, exchange, or retirement and that holder's tax basis in the note. A U.S. Holder's tax basis in a note generally will equal the cost of that note, increased by the amount of OID previously accrued by the holder for that note (without regard to any positive or negative adjustments) and reduced by any projected payments for previous periods on the notes and, if applicable, increased or decreased by the amount of any positive or negative adjustment that the holder is required to make with respect to the notes under the rules set forth above addressing purchases of notes for an amount that differs from the notes' adjusted issue price at the time of purchase. A U.S. Holder generally will treat any gain as interest income, and will treat any loss as ordinary loss to the extent of the excess of previous interest inclusions over the total negative adjustments previously taken into account as ordinary losses, and the balance as long-term or short-term capital loss depending upon the U.S. Holder's holding period for the note. The deductibility of capital losses by a U.S. Holder is subject to limitations.

Unrelated Business Taxable Income

Section 511 of the Code generally imposes a tax, at regular corporate or trust income tax rates, on the "unrelated business taxable income" of certain tax-exempt organizations, including qualified pension and profit sharing plan trusts and individual retirement accounts. In general, if the notes are held for investment purposes, the amount of income or gain realized with respect to a note should not constitute unrelated business taxable income. However, if a note constitutes debt-financed property (as defined in Section 514(b) of the Code) by reason of indebtedness incurred by a holder of a note to purchase or carry the note, all or a portion of any income or gain realized with respect to such note may be classified as unrelated business taxable income pursuant to Section 514 of the Code. Moreover,

Table of Contents

prospective investors in the notes should be aware that whether or not any income or gain realized with respect to a note which is owned by an organization that is generally exempt from U.S. federal income taxation constitutes unrelated business taxable income will depend upon the specific facts and circumstances applicable to such organization. Accordingly, any potential investors in the notes that are generally exempt from U.S. federal income taxation should consult with their own tax advisors concerning the U.S. federal income tax consequences to them of investing in the notes.

Non-U.S. Holders – Income Tax Considerations

U.S. Federal Income and Withholding Tax

Under current U.S. federal income tax law and subject to the discussion below concerning backup withholding, principal and interest payments, including any OID, that are received from us or our agent and that are not effectively connected with the conduct by the Non-U.S. Holder of a trade or business within the United States, or a permanent establishment maintained in the United States if certain tax treaties apply, generally will not be subject to U.S. federal income or withholding tax except as provided below. Interest, including any OID and any gain realized on the sale, exchange, or retirement of a note, may be subject to a 30% withholding tax (or less under an applicable treaty, if any) if:

- a Non-U.S. Holder actually or constructively owns 10% or more of the total combined voting power of all classes of our stock entitled to vote;
- a Non-U.S. Holder is a “controlled foreign corporation” for U.S. federal income tax purposes that is related to us (directly or indirectly) through stock ownership;
- a Non-U.S. Holder is a bank extending credit under a loan agreement in the ordinary course of its trade or business;
- the payments on the notes are determined by reference to the income, profits, changes in the value of property or other attributes of the debtor or a related party (other than payments that are based on the value of a security or index of securities that are, and will continue to be, actively traded within the meaning of Section 1092(d) of the Code, and that are not nor will be a “United States real property interest” as described in Section 897(c)(1) or 897(g) of the Code); or
- the Non-U.S. Holder does not satisfy the certification requirements described below.

A Non-U.S. Holder generally will satisfy the certification requirements if either: (A) the Non-U.S. Holder certifies to us or our agent, under penalties of perjury, that it is a non-United States person and provides its name and address (which certification may generally be made on an IRS Form W-8BEN, or a successor form), or (B) a securities clearing organization, bank, or other financial institution that holds customer securities in the ordinary course of its trade or business (a “financial institution”) and holds the notes either (i) certifies to us or our agent under penalties of perjury that either it or another financial institution has received the required statement from the Non-U.S. Holder certifying that it is a non-United States person and furnishes us with a copy of the statement or (ii) otherwise complies with applicable U.S. federal income and withholding tax certification requirements.

Payments not meeting the requirements set forth above and thus subject to withholding of U.S. federal income tax may nevertheless be exempt from withholding (or subject to withholding at a reduced rate) if the Non-U.S. Holder provides us with a properly executed IRS Form W-8BEN (or successor form) claiming an exemption from, or reduction in, withholding under the benefit of a tax treaty, or IRS Form W-8ECI (or other applicable form) stating that income on the notes is not subject to withholding tax because it is effectively connected with the conduct of a trade or business within the United States as discussed below. To claim benefits under an income tax treaty, a Non-U.S. Holder must obtain a taxpayer identification number and certify as to its eligibility under the appropriate treaty’s limitations on benefits article, if applicable. In addition, special rules may apply to claims for treaty benefits made by Non-U.S. Holders that are entities rather than individuals. A Non-U.S. Holder that is eligible for a reduced rate of U.S. federal withholding tax pursuant to an income tax treaty may obtain a refund of any excess amounts withheld by filing an appropriate claim for refund with the IRS.

Table of Contents

If a Non-U.S. Holder of a note is engaged in the conduct of a trade or business within the United States and if interest (including any OID) on the note, or gain realized on the sale, exchange, or other disposition of the note, is effectively connected with the conduct of such trade or business (and, if certain tax treaties apply, is attributable to a permanent establishment maintained by the Non-U.S. Holder in the United States), the Non-U.S. Holder, although exempt from U.S. federal withholding tax (provided that the applicable certification requirements are satisfied), generally will be subject to U.S. federal income tax on such interest (including any OID) or gain on a net income basis in the same manner as if it were a U.S. Holder. Non-U.S. Holders should read the material under the heading “—U.S. Holders – Income Tax Considerations,” for a description of the U.S. federal income tax consequences of acquiring, owning, and disposing of notes. In addition, if such Non-U.S. Holder is a foreign corporation, it may also be subject to a branch profits tax equal to 30% (or such lower rate provided by an applicable U.S. income tax treaty) of a portion of its earnings and profits for the taxable year that are effectively connected with its conduct of a trade or business in the United States, subject to certain adjustments.

U.S. Federal Estate Tax

Under current law, a note should generally not be includible in the estate of a Non-U.S. Holder unless the individual actually or constructively owns 10% or more of the total combined voting power of all classes of our stock entitled to vote or, at the time of the individual’s death, payments in respect of that note would have been effectively connected with the conduct by the individual of a trade or business in the United States.

Backup Withholding and Information Reporting

In general, in the case of a U.S. Holder, other than certain exempt holders, we and other payors are required to report to the IRS all payments of principal, any premium, and interest on the notes, and the accrual of OID. In addition, we and other payors generally are required to report to the IRS any payment of proceeds of the sale of a note before maturity. Additionally, backup withholding generally will apply to any payments, including payments of OID, if a U.S. Holder fails to provide an accurate taxpayer identification number and certify that the taxpayer identification number is correct, the U.S. Holder is notified by the IRS that it has failed to report all interest and dividends required to be shown on its U.S. federal income tax returns or a U.S. Holder does not certify that it has not underreported its interest and dividend income.

In the case of a Non-U.S. Holder, backup withholding and information reporting will not apply to payments made if the Non-U.S. Holder provides the required certification that it is not a United States person, or the Non-U.S. Holder otherwise establishes an exemption, provided that the payor or withholding agent does not have actual knowledge that the holder is a United States person, or that the conditions of any exemption are not satisfied.

In addition, payments of the proceeds from the sale of a note to or through a foreign office of a broker or the foreign office of a custodian, nominee, or other dealer acting on behalf of a holder generally will not be subject to information reporting or backup withholding. However, if the broker, custodian, nominee, or other dealer is a United States person, the government of the United States or the government of any state or political subdivision of any state, or any agency or instrumentality of any of these governmental units, a controlled foreign corporation for U.S. federal income tax purposes, a foreign partnership that is either engaged in a trade or business within the United States or whose U.S. partners in the aggregate hold more than 50% of the income or capital interest in the partnership, a foreign person 50% or more of whose gross income for a certain period is effectively connected with a trade or business within the United States, or a U.S. branch of a foreign bank or insurance company, information reporting (but not backup withholding) generally will be required with respect to payments made to a holder unless the broker, custodian, nominee, or other dealer has documentation of the holder’s foreign status and the broker, custodian, nominee, or other dealer has no actual knowledge to the contrary.

Payment of the proceeds from a sale of a note to or through the U.S. office of a broker is subject to information reporting and backup withholding, unless the holder certifies as to its non-United States person status or otherwise establishes an exemption from information reporting and backup withholding.

Table of Contents

Any amounts withheld under the backup withholding rules will be allowed as a refund or a credit against a holder's U.S. federal income tax liability provided the required information is furnished to the IRS.

Reportable Transactions

Applicable Treasury regulations require taxpayers that participate in "reportable transactions" to disclose their participation to the IRS by attaching Form 8886 to their tax returns and to retain a copy of all documents and records related to the transaction. In addition, "material advisors" with respect to such a transaction may be required to file returns and maintain records, including lists identifying investors in the transaction, and to furnish those records to the IRS upon demand. A transaction may be a "reportable transaction" based on any of several criteria, one or more of which may be present with respect to an investment in the notes. Whether an investment in the notes constitutes a "reportable transaction" for any investor depends on the investor's particular circumstances. Investors should consult their own tax advisors concerning any possible disclosure obligation they may have for their investment in the notes and should be aware that, should any "material advisor" determine that the return filing or investor list maintenance requirements apply to this transaction, they would be required to comply with these requirements.

Additional Medicare Tax on Unearned Income

With respect to taxable years beginning after December 31, 2012, certain U.S. Holders, including individuals, estates, and trusts, will be subject to an additional 3.8% Medicare tax on unearned income. For individual U.S. Holders, the additional Medicare tax applies to the lesser of (i) "net investment income," or (ii) the excess of "modified adjusted gross income" over \$200,000 (\$250,000 if married and filing jointly or \$125,000 if married and filing separately). "Net investment income" generally equals the taxpayer's gross investment income reduced by the deductions that are allocable to such income. Investment income generally includes passive income such as interest, dividends, annuities, royalties, rents, and capital gains. U.S. Holders are urged to consult their own tax advisors regarding the implications of the additional Medicare tax resulting from an investment in the notes.

ERISA CONSIDERATIONS

Each fiduciary of a pension, profit-sharing, or other employee benefit plan subject to ERISA (a "Plan"), should consider the fiduciary standards of ERISA in the context of the Plan's particular circumstances before authorizing an investment in the notes. Accordingly, among other factors, the fiduciary should consider whether the investment would satisfy the prudence and diversification requirements of ERISA and would be consistent with the documents and instruments governing the Plan.

In addition, we and certain of our subsidiaries and affiliates, including MLPF&S, may be each considered a party in interest within the meaning of ERISA, or a disqualified person within the meaning of the Code, with respect to many Plans, as well as many individual retirement accounts and Keogh plans (also "Plans"). Prohibited transactions within the meaning of ERISA or the Code would likely arise, for example, if the notes are acquired by or with the assets of a Plan with respect to which MLPF&S or any of our other affiliates is a party in interest, unless the notes are acquired under an exemption from the prohibited transaction rules. A violation of these prohibited transaction rules could result in an excise tax or other liabilities under ERISA and/or Section 4975 of the Code for such persons, unless exemptive relief is available under an applicable statutory or administrative exemption.

Under ERISA and various PTCEs issued by the U.S. Department of Labor, exemptive relief may be available for direct or indirect prohibited transactions resulting from the purchase, holding, or disposition of the notes. Those exemptions are PTCE 96-23 (for certain transactions determined by in-house asset managers), PTCE 95-60 (for certain transactions involving insurance company general accounts), PTCE 91-38 (for certain transactions involving bank collective investment funds), PTCE 90-1 (for certain transactions involving insurance company separate accounts), PTCE 84-14 (for certain transactions determined by independent qualified asset managers), and the exemption under Section 408(b)(17) of ERISA and Section 4975(d)(20) of the Code for certain arm's-length transactions with a person that is a party in interest solely by reason of providing services to Plans or being an affiliate of such a service provider (the "Service Provider Exemption").

Table of Contents

Because we may be considered a party in interest with respect to many Plans, the notes may not be purchased, held, or disposed of by any Plan, any entity whose underlying assets include plan assets by reason of any Plan's investment in the entity (a "Plan Asset Entity") or any person investing plan assets of any Plan, unless such purchase, holding, or disposition is eligible for exemptive relief, including relief available under PTCE 96-23, 95-60, 91-38, 90-1, or 84-14 or the Service Provider Exemption, or such purchase, holding, or disposition is otherwise not prohibited. Any purchaser, including any fiduciary purchasing on behalf of a Plan, transferee or holder of the notes will be deemed to have represented, in its corporate and its fiduciary capacity, by its purchase and holding of the notes that either (a) it is not a Plan or a Plan Asset Entity and is not purchasing such notes on behalf of or with plan assets of any Plan or with any assets of a governmental, church, or foreign plan that is subject to any federal, state, local, or foreign law that is substantially similar to the provisions of Section 406 of ERISA or Section 4975 of the Code or (b) its purchase, holding, and disposition are eligible for exemptive relief or such purchase, holding, and disposition are not prohibited by ERISA or Section 4975 of the Code (or in the case of a governmental, church, or foreign plan, any substantially similar federal, state, local, or foreign law).

The fiduciary investment considerations summarized above generally apply to employee benefit plans maintained by private-sector employers and to individual retirement accounts and other arrangements subject to Section 4975 of the Code, but generally do not apply to governmental plans (as defined in Section 3(32) of ERISA), certain church plans (as defined in Section 3(33) of ERISA), and foreign plans (as described in Section 4(b)(4) of ERISA). However, these other plans may be subject to similar provisions under applicable federal, state, local, foreign, or other regulations, rules, or laws ("similar laws"). The fiduciaries of plans subject to similar laws should also consider the foregoing issues in general terms as well as any further issues arising under the applicable similar laws.

Purchasers of the notes have exclusive responsibility for ensuring that their purchase, holding, and disposition of the notes do not violate the prohibited transaction rules of ERISA or the Code or any similar regulations applicable to governmental or church plans, as described above.

This discussion is a general summary of some of the rules which apply to benefit plans and their related investment vehicles. This summary does not include all of the investment considerations relevant to Plans and other benefit plan investors such as governmental, church, and foreign plans and should not be construed as legal advice or a legal opinion. Due to the complexity of these rules and the penalties that may be imposed upon persons involved in non-exempt prohibited transactions, it is particularly important that fiduciaries or other persons considering purchasing the notes on behalf of or with "plan assets" of any Plan or other benefit plan investor consult with their legal counsel prior to directing any such purchase.