

(To prospectus dated June 3, 2003)



2,500,000 Units
Merrill Lynch & Co., Inc.
Strategic Return Notes[®]
Linked to the Industrial 15 Index due August 5, 2008
(the “Notes”)
\$10 original public offering price per Unit

The Notes:

- Senior unsecured debt securities of Merrill Lynch & Co., Inc.
- Exchangeable at your option for a cash payment during a specified period in July of each year from 2004 through 2007 as described in this prospectus supplement.
- No payments prior to maturity unless exchanged.
- Linked to the value of the Industrial 15 Index (index symbol “IXD”).
- The Notes have been approved for quotation on the Nasdaq National Market under the trading symbol “DWID”.
- Expected closing date: August 5, 2003.

Payment at maturity or upon exchange:

- At maturity or upon exchange, you will receive a cash amount based upon the percentage change in the value of the Industrial 15 Index, which reflects the total return of the top fifteen dividend yielding stocks from a group of certain stocks in the Standard & Poor’s Industrial Index, reconstituted annually, less an annual index adjustment factor of 1.5%.
- At maturity or upon exchange, the amount you receive will depend on the value of the Industrial 15 Index. The value of the Industrial 15 Index must increase in order for you to receive at least the original public offering price of \$10 per Note at maturity or upon exchange. If the value of the Industrial 15 Index has declined or has not increased sufficiently, you will receive less, and possibly significantly less, than the original public offering price of \$10 per Note.

Investing in the Notes involves risks that are described in the “[Risk Factors](#)” section beginning on page S-7 of this prospectus supplement.

Neither the Securities and Exchange Commission nor any state securities commission has approved or disapproved of these securities or determined if this prospectus supplement or the accompanying prospectus is truthful or complete. Any representation to the contrary is a criminal offense.

| | <u>Per Unit</u> | <u>Total</u> |
|---------------------------------------------------------|-----------------|--------------|
| Public offering price | \$10.00 | \$25,000,000 |
| Underwriting fee | \$.20 | \$500,000 |
| Proceeds, before expenses, to Merrill Lynch & Co., Inc. | \$9.90* | \$24,750,000 |

* \$.10 per Unit of the underwriting fee will be paid to the underwriter by a subsidiary of Merrill Lynch & Co., Inc. For a description of this payment, please see the section entitled “Underwriting” in this prospectus supplement.

Merrill Lynch & Co.

The date of this prospectus supplement is July 30, 2003.

“Strategic Return Notes” is a registered mark of Merrill Lynch & Co., Inc.

TABLE OF CONTENTS

Prospectus Supplement

| | <u>Page</u> |
|-------------------------------------------------------|-------------|
| SUMMARY INFORMATION—Q&A | S-3 |
| RISK FACTORS | S-7 |
| DESCRIPTION OF THE NOTES | S-11 |
| THE INDUSTRIAL 15 INDEX | S-16 |
| UNITED STATES FEDERAL INCOME TAXATION | S-21 |
| ERISA CONSIDERATIONS | S-23 |
| USE OF PROCEEDS AND HEDGING | S-24 |
| WHERE YOU CAN FIND MORE INFORMATION | S-24 |
| UNDERWRITING | S-26 |
| VALIDITY OF THE NOTES | S-27 |
| EXPERTS | S-27 |
| INDEX OF CERTAIN DEFINED TERMS | S-28 |
| ANNEX A | A-1 |

Prospectus

| | <u>Page</u> |
|------------------------------------------------------------------------------------------------------------------|-------------|
| MERRILL LYNCH & CO., INC | 2 |
| USE OF PROCEEDS | 2 |
| RATIO OF EARNINGS TO FIXED CHARGES AND RATIO OF EARNINGS TO COMBINED FIXED CHARGES AND PREFERRED STOCK DIVIDENDS | 3 |
| THE SECURITIES | 3 |
| DESCRIPTION OF DEBT SECURITIES | 4 |
| DESCRIPTION OF DEBT WARRANTS | 13 |
| DESCRIPTION OF CURRENCY WARRANTS | 15 |
| DESCRIPTION OF INDEX WARRANTS | 16 |
| DESCRIPTION OF PREFERRED STOCK | 22 |
| DESCRIPTION OF DEPOSITARY SHARES | 27 |
| DESCRIPTION OF PREFERRED STOCK WARRANTS | 31 |
| DESCRIPTION OF COMMON STOCK | 33 |
| DESCRIPTION OF COMMON STOCK WARRANTS | 36 |
| PLAN OF DISTRIBUTION | 39 |
| WHERE YOU CAN FIND MORE INFORMATION | 39 |
| INCORPORATION OF INFORMATION WE FILE WITH THE SEC | 40 |
| EXPERTS | 41 |

SUMMARY INFORMATION—Q&A

This summary includes questions and answers that highlight selected information from this prospectus supplement and the accompanying prospectus to help you understand the Strategic Return Notes[®] Linked to the Industrial 15 Index due August 5, 2008 (the “Notes”). You should carefully read this prospectus supplement and the accompanying prospectus to fully understand the terms of the Notes, the Industrial 15 Index and the tax and other considerations that are important to you in making a decision about whether to invest in the Notes. You should carefully review the “Risk Factors” section, which highlights certain risks associated with an investment in the Notes, to determine whether an investment in the Notes is appropriate for you.

References in this prospectus supplement to “ML&Co.,” “we,” “us” and “our” are to Merrill Lynch & Co., Inc., and references to “MLPF&S” are to Merrill Lynch, Pierce, Fenner & Smith Incorporated.

What are the Notes?

The Notes will be a series of senior debt securities issued by ML&Co. and will not be secured by collateral. The Notes will rank equally with all of our other unsecured and unsubordinated debt. The Notes will mature on August 5, 2008 unless exchanged by you as described in this prospectus supplement.

A Unit will represent a single Note with an original public offering price of \$10.00 (a “Unit”). You may transfer the Notes only in whole Units. You will not have the right to receive physical certificates evidencing your ownership except under limited circumstances. Instead, we will issue the Notes in the form of a global certificate, which will be held by The Depository Trust Company, also known as DTC, or its nominee. Direct and indirect participants in DTC will record your ownership of the Notes. You should refer to the section entitled “Description of the Debt Securities—Depository” in the accompanying prospectus.

What will I receive upon maturity of the Notes?

At maturity, if you have not previously exchanged your Notes, you will receive a cash payment on the Notes equal to the “Redemption Amount”.

The “Redemption Amount” per Unit will equal:

$$\$9.90 \times \left(\frac{\text{Ending Value}}{\text{Starting Value}} \right)$$

The Industrial 15 Index will need to increase in order for you to receive a Redemption Amount equal to or greater than the original public offering price, and, if the value of the Industrial 15 Index declines or has not increased sufficiently, you will receive less than the original public offering price of the Notes.

The “Starting Value” equals 103.76, the closing value of the Industrial 15 Index on July 30, 2003, the date the Notes were priced for initial sale to the public (the “Pricing Date”).

For purposes of determining the Redemption Amount, the “Ending Value” means the average, arithmetic mean, of the values of the Industrial 15 Index at the close of the market on five business days shortly before the maturity of the Notes. We may calculate the Ending Value by reference to fewer than five or even a single day’s closing value if, during the period shortly before the maturity date of the Notes, there is a disruption in the trading of a stock included in the Industrial 15 Index or certain futures or options contracts relating to a stock included in the Industrial 15 Index.

For more specific information about the Redemption Amount, please see the section entitled “Description of the Notes” in this prospectus supplement.

Table of Contents

Examples

Here are two examples of Redemption Amount calculations:

Example 1—The Industrial 15 Index at maturity is below the Starting Value:

Starting Value: 103.76

Hypothetical Ending Value: 20.75

$$\text{Redemption Amount (per Unit)} = \$9.90 \times \left(\frac{20.75}{103.76} \right) = \$1.98$$

Total payment at maturity (per Unit) = \$1.98

Example 2—The Industrial 15 Index at maturity is above the Starting Value:

Starting Value: 103.76

Hypothetical Ending Value: 186.77

$$\text{Redemption Amount (per Unit)} = \$9.90 \times \left(\frac{186.77}{103.76} \right) = \$17.82$$

Total payment at maturity (per Unit) = \$17.82

How does the exchange feature work?

You may elect to exchange all or a portion of your Notes during a specified period in the month of July in the years 2004 through 2007 by giving notice to the depository or trustee of the Notes, as the case may be, as described in this prospectus supplement. The amount of the cash payment you receive upon exchange (the “Exchange Amount”) will be equal to the Redemption Amount, calculated as if the Exchange Date, as defined in this prospectus supplement, were the stated maturity date, except that the Ending Value will be equal to the closing value of the Industrial 15 Index on the Exchange Date. The Exchange Amount will be paid three Business Days following the Exchange Date. If you elect to exchange your Notes, you will receive only the Exchange Amount and you will not receive the Redemption Amount at maturity. The Exchange Amount you receive may be greater than or less than the Redemption Amount at maturity depending upon the performance of the Industrial 15 Index during the period from the Exchange Date until the stated maturity date. In addition, if the value of the Industrial 15 Index has not increased sufficiently above the Starting Value, the Exchange Amount will be less than the original public offering price.

For more specific information about the exchange feature, please see the section entitled “Description of the Notes—Exchange of the Notes Prior to Maturity” in this prospectus supplement.

Who publishes the Industrial 15 Index and what does the Industrial 15 Index measure?

The Industrial 15 Index is calculated and disseminated by the American Stock Exchange under the index symbol “IXD”. The Industrial 15 Index is an index which reflects the price changes and dividends of the top fifteen dividend yielding stocks from a group of certain stocks in Standard & Poor’s Industrial Index (the “S&P Industrial Index”) less an annual index adjustment factor of 1.5% applied daily (the “Index Adjustment Factor”). The Industrial 15 Index has been calculated and disseminated since June 26, 2001. The Industrial 15 Index is reconstituted on June 26th of each year, the anniversary of the date the Industrial 15 Index was first calculated and disseminated or, under certain circumstances, on a day shortly after the anniversary date, as described in this prospectus supplement. For more specific information about the Industrial 15 Index and its reconstitution, and the Index Adjustment Factor, please see the section entitled “The Industrial 15 Index” in this prospectus supplement.

The Notes are debt obligations of ML&Co. and an investment in the Notes does not entitle you to any ownership interest in the stocks included in the Industrial 15 Index (collectively, the “Industrial 15 Stocks”).

[Table of Contents](#)

How has the Industrial 15 Index performed historically?

The value of the Industrial 15 Index was set to 100 on June 26, 2001, the date the Industrial 15 Index was initially calculated. On July 30, 2003, the closing value of the Industrial 15 Index was 103.76. While historical information on the Industrial 15 Index exists only for the period from and after June 26, 2001, we have provided a table and a graph showing the hypothetical month-end closing values of the Industrial 15 Index from May 1996 through May 2001. These hypothetical closing values have been calculated on the same basis that the Industrial 15 Index is currently calculated. We have provided this information to illustrate how the Industrial 15 Index would have performed from May 1996 through May 2001. For further details on the calculation of these hypothetical closing values, please refer to the section entitled “The Industrial 15 Index—Hypothetical and Historical Data on the Industrial 15 Index ” in this prospectus supplement. We have also provided the actual month-end closing values of the Industrial 15 Index from June 2001 through June 2003. Any historical upward or downward trend in the level of the Industrial 15 Index during the periods presented is not an indication that the Industrial 15 Index is more or less likely to increase or decrease at any time during the term of the Notes.

Will I receive interest payments on the Notes?

You will not receive any interest payments on the Notes, but you will receive the Exchange Amount following the exercise of your exchange option or the Redemption Amount at maturity. We have designed the Notes for investors who are willing to forego market interest payments on the Notes, such as fixed or floating interest rates paid on standard senior non-callable debt securities, in exchange for the Exchange Amount or the Redemption Amount.

What about taxes?

The U.S. federal income tax consequences of an investment in the Notes are complex and uncertain. By purchasing a Note, you and ML&Co. hereby agree, in the absence of an administrative or judicial ruling to the contrary, to characterize a Note for all tax purposes as a pre-paid cash-settled forward contract linked to the value of the Industrial 15 Index. Under this characterization of the Notes, you should be required to recognize gain or loss to the extent that you receive cash on the maturity date or upon a sale or exchange of a Note prior to the maturity date. You should review the discussion under the section entitled “United States Federal Income Taxation” in this prospectus supplement.

Will the Notes be listed on a stock exchange?

The Notes have been approved for quotation on the Nasdaq National Market under the trading symbol “DWID”. You should be aware that the quotation of the Notes on the Nasdaq National Market will not necessarily ensure that a liquid trading market will be available for the Notes. You should review the section entitled “Risk Factors—There may be an uncertain trading market for the Notes” in this prospectus supplement.

What is the role of MLPF&S?

Our subsidiary, MLPF&S, is the underwriter for the offering and sale of the Notes. After the initial offering, MLPF&S intends to buy and sell Notes to create a secondary market for holders of the Notes, and may stabilize or maintain the market price of the Notes during their initial distribution. However, MLPF&S will not be obligated to engage in any of these market activities or continue them once it has started.

MLPF&S will also be our agent for purposes of calculating, among other things, the Ending Value, Redemption Amount and Exchange Amounts. Under certain circumstances, these duties could result in a conflict of interest between the status of MLPF&S as our subsidiary and its responsibilities as calculation agent.

What is ML&Co.?

Merrill Lynch & Co., Inc. is a holding company with various subsidiary and affiliated companies that provide investment, financing, insurance and related services on a global basis.

[Table of Contents](#)

For information about ML&Co., see the section entitled “Merrill Lynch & Co., Inc.” in the accompanying prospectus. You should also read other documents we have filed with the SEC, which you can find by referring to the section entitled “Where You Can Find More Information” in this prospectus supplement.

Are there any risks associated with my investment?

Yes, an investment in the Notes is subject to risks. Please refer to the section entitled “Risk Factors” in this prospectus supplement.

RISK FACTORS

Your investment in the Notes will involve risks. An investment in the Notes involves credit risks which are identical to those related to investments in any other debt obligations of ML&Co., and additional risks which are similar to investing in each of the Industrial 15 Stocks. You should carefully consider the following discussion of risks before deciding whether an investment in the Notes is suitable for you.

Your investment may result in a loss

We will not repay you a fixed amount of principal on the Notes at maturity or upon exchange. The payment on the Notes will depend on the change in the value of the Industrial 15 Index. Because the value of the Industrial 15 Index is subject to market fluctuations, the amount of cash you receive may be more or less than the original public offering price of your Notes. If the applicable Ending Value, at maturity or at the time you exchange your Notes, is less than or not sufficiently above the Starting Value, then the amount you receive will be less than the original public offering price of each Note, in which case your investment in the Notes will result in a loss to you. The original public offering price of \$10 per Unit exceeds the \$9.90 per Unit amount used to calculate the Redemption Amount and therefore the Industrial 15 Index must increase in order for you to receive a Redemption Amount or Exchange Amount equal to the original public offering price.

The value of the Industrial 15 Index is expected to affect the trading value of the Notes

The market value of the Notes will depend substantially on the amount by which the Industrial 15 Index exceeds or does not exceed the Starting Value. The value of the Notes is related to the Industrial 15 Index, and consequently, a sale of the Notes may result in a loss. Additionally, because the trading value and perhaps final return on your Notes is dependent on factors in addition to the Industrial 15 Index, such as our credit rating, an increase in the value of the Industrial 15 Index will not reduce the other investment risks related to the Notes.

Changes in our credit ratings may affect the trading value of the Notes

Our credit ratings are an assessment of our ability to pay our obligations. Consequently, real or anticipated changes in our credit ratings may affect the trading value of the Notes. However, because the return on your Notes is dependent upon factors in addition to our ability to pay our obligations under the Notes, such as the value of the Industrial 15 Index at maturity, an improvement in our credit ratings will not reduce the other investment risks related to the Notes.

Your investment may become concentrated

As a result of market fluctuations and/or reconstitution events, an investment in the Notes may carry risks similar to a concentrated investment in one or more industries.

Your yield may be lower than the yield on other debt securities of comparable maturity

The amount we pay you at maturity or upon exchange may be less than the return you could earn on other investments. Your yield may be less than the yield you would earn if you bought other senior non-callable debt securities of ML&Co. with the same stated maturity date. Your investment may not reflect the full opportunity cost to you when you take into account factors that affect the time value of money.

[Table of Contents](#)

Your return will not reflect the return of owning the Industrial 15 Stocks

While the Industrial 15 Index does reflect the payment of dividends on the Industrial 15 Stocks as described in more detail below, the yield to the maturity of the Notes will not produce the same yield as if the Industrial 15 Stocks were purchased and held for a similar period. At the end of each calendar quarter, the dividends accrued on the Industrial 15 Stocks will be incorporated into the Industrial 15 Index by adjusting the Share Multipliers of the stocks and the amounts will then be subject to the price movements of the stocks. In addition, at the end of each day, the Industrial 15 Index will be reduced by a pro rata portion of the annual Index Adjustment Factor of 1.5%. Due to the effect of the annual Index Adjustment Factor and to the matters discussed above under “Your investment may result in a loss”, the return on an investment in the Notes will be less than the return on a similar investment in the Industrial 15 Stocks, assuming transaction costs and taxes are not taken into account. The trading value of the Notes and final return on the Notes may also differ from the results of the Industrial 15 Index for the reasons discussed above under “Changes in our credit ratings may affect the trading value of the Notes”.

There may be an uncertain trading market for the Notes

The Notes have been approved for quotation on the Nasdaq National Market under the trading symbol “DWID”. You should be aware that quotation of the Notes on the Nasdaq National Market does not ensure that a trading market will develop for the Notes. If a trading market does develop, there can be no assurance that there will be liquidity in the trading market. The development of a trading market for the Notes will depend on our financial performance and other factors such as the change in the value of the Industrial 15 Index.

If the trading market for the Notes is limited, there may be a limited number of buyers for your Notes if you do not wish to hold your investment until maturity. This may affect the price you receive.

Risk factors specific to companies included in the Industrial 15 Index

The Industrial 15 Index is an index which reflects the price changes and dividends of the top fifteen dividend yielding Qualifying Stocks in the S&P Industrial Index less an annual Index Adjustment Factor. The stock prices of some of the companies included in the Industrial 15 Index (the “Industrial 15 Companies”) have been and may continue to be volatile. These stock prices could be subject to wide fluctuations in response to a variety of factors, including the following:

- general market fluctuations;
- actual or anticipated variations in the quarterly operating results of the Industrial 15 Companies;
- announcements of technological innovations or new services offered by competitors of the Industrial 15 Companies;
- changes in financial estimates by securities analysts;
- regulatory or legal developments, including significant litigation matters, affecting the Industrial 15 Companies or in the industries in which they operate;
- announcements by competitors of the Industrial 15 Companies of significant acquisitions, strategic partnerships, joint ventures or capital commitments; and
- departures of key personnel of the Industrial 15 Companies.

Table of Contents

The international operations of some of the Industrial 15 Companies expose them to risks inherent to international business. The risks of international business that these companies are exposed to include the following:

- general economic, social and political conditions in the countries where they operate;
- the difficulty of enforcing intellectual property rights, agreements and collecting receivables through certain foreign legal systems;
- differing tax rates, tariffs, exchange controls or other similar restrictions;
- currency exchange rate fluctuations; and
- changes in, and compliance with, domestic and foreign laws and regulations which impose a range of restrictions on operations, trade practices, foreign trade and international investment decisions.

Amounts payable on the Notes may be limited by state law

New York State law governs the 1983 Indenture under which the Notes will be issued. New York has usury laws that limit the amount of interest that can be charged and paid on loans, which includes debt securities like the Notes. Under present New York law, the maximum rate of interest is 25% per annum on a simple interest basis. This limit may not apply to debt securities in which \$2,500,000 or more has been invested.

While we believe that New York law would be given effect by a state or Federal court sitting outside of New York, many other states also have laws that regulate the amount of interest that may be charged to and paid by a borrower. We will promise, for the benefit of the Note holders, to the extent permitted by law, not to voluntarily claim the benefits of any laws concerning usurious rates of interest.

Purchases and sales by us and our affiliates may affect your return

We and our affiliates may from time to time buy or sell the Industrial 15 Stocks or futures or options contracts on the Industrial 15 Stocks for our own accounts for business reasons and expect to enter into such transactions in connection with hedging our obligations under the Notes. These transactions could affect the price of the Industrial 15 Stocks and, in turn, the value of the Industrial 15 Index in a manner that would be adverse to your investment in the Notes. Any purchases by us, our affiliates or others on our behalf on or before the Pricing Date may temporarily increase the prices of the Industrial 15 Stocks. Temporary increases in the market prices of the Industrial 15 Stocks may also occur as a result of the purchasing activities of other market participants. Consequently, the prices of the Industrial 15 Stocks may decline subsequent to the Pricing Date reducing the value of the Industrial 15 Index and therefore the market value of the Notes.

Potential conflicts

Our subsidiary, MLPF&S, is our agent for the purposes of calculating the Ending Value, Redemption Amount and Exchange Amounts. Under certain circumstances, MLPF&S' role as our subsidiary and its responsibilities as calculation agent for the Notes could give rise to conflicts of interest. These conflicts could occur, for instance, in connection with its determination as to whether the value of the Industrial 15 Index can be calculated on a particular trading day, or in connection with judgments that it would be required to make in the event of a discontinuance of the Industrial 15 Index. See the sections entitled "Description of the Notes—Adjustments to the Industrial 15 Index; Market Disruption Events" and "— Discontinuance of the Industrial 15 Index " in this prospectus supplement. MLPF&S is required to carry out its duties as calculation agent in good faith and using its reasonable judgment. However, you should be aware that because we control MLPF&S, potential conflicts of interest could arise. MLPF&S, the underwriter, will pay an additional amount on each

Table of Contents

anniversary of the Pricing Date in 2004 through 2007 to brokers whose client accounts purchased their Units in the initial distribution and continue to hold the Notes. In addition, MLPF&S may from time to time pay additional amounts to brokers whose clients purchased Notes in the secondary market and continue to hold the Notes. You should understand that as a result of this additional payment, your broker receives a financial benefit each year you retain your investment in the Notes. Please see the section entitled “Underwriting” in this prospectus supplement.

We have entered into an arrangement with one of our subsidiaries to hedge the market risks associated with our obligation to pay amounts due at maturity on the Notes. This subsidiary expects to make a profit in connection with this arrangement. We did not seek competitive bids for this arrangement from unaffiliated parties.

ML&Co. or its affiliates may presently or from time to time engage in business with one or more of the Industrial 15 Companies including extending loans to, or making equity investments in, the Industrial 15 Companies or providing advisory services to the Industrial 15 Companies, including merger and acquisition advisory services. In the course of business, ML&Co. or its affiliates may acquire non-public information relating to the Industrial 15 Companies and, in addition, one or more affiliates of ML&Co. may publish research reports about the Industrial 15 Companies. ML&Co. does not make any representation to any purchasers of the Notes regarding any matters whatsoever relating to the Industrial 15 Companies. Any prospective purchaser of the Notes should undertake an independent investigation of the Industrial 15 Companies as in its judgment is appropriate to make an informed decision regarding an investment in the Notes. The composition of the Industrial 15 Index does not reflect any investment or sell recommendations of ML&Co. or its affiliates.

Uncertain tax consequences

You should consider the tax consequences of investing in the Notes, aspects of which are uncertain. See the section entitled “United States Federal Income Taxation” in this prospectus supplement.

DESCRIPTION OF THE NOTES

ML&Co. will issue the Notes as a series of senior debt securities under the 1983 Indenture, which is more fully described in the accompanying prospectus. Unless exchanged by you, the Notes will mature on August 5, 2008.

While at maturity or upon exchange a beneficial owner of a Note will receive an amount equal to the Redemption Amount or the Exchange Amount, as the case may be, there will be no other payment of interest, periodic or otherwise. See the section entitled “—Payment at Maturity” and “—Exchange of the Notes Prior to Maturity” in this prospectus supplement.

The Notes may be exchanged by you during an Exchange Notice Period, but are not subject to redemption by ML&Co. before maturity. If an Event of Default occurs with respect to the Notes, beneficial owners of the Notes may accelerate the maturity of the Notes, as described under “—Events of Default and Acceleration” in this prospectus supplement and “Description of Debt Securities—Events of Default” in the accompanying prospectus.

ML&Co. will issue the Notes in denominations of whole Units each with an original public offering price of \$10 per Unit. You may transfer the Notes only in whole Units. You will not have the right to receive physical certificates evidencing your ownership except under limited circumstances. Instead, we will issue the Notes in the form of a global certificate, which will be held by The Depository Trust Company, also known as DTC, or its nominee. Direct and indirect participants in DTC will record your ownership of the Notes. You should refer to the section entitled “Description of the Debt Securities—Depository” in the accompanying prospectus.

The Notes will not have the benefit of any sinking fund.

Payment at Maturity

For each Note that has not been exchanged prior to maturity, the holder will be entitled to receive the Redemption Amount, as provided below.

Determination of the Redemption Amount

The “**Redemption Amount**” per Unit will be determined by the calculation agent and will equal:

$$\$9.90 \times \left(\frac{\text{Ending Value}}{\text{Starting Value}} \right)$$

The “**Starting Value**” equals 103.76, the closing value of the Industrial 15 Index on the Pricing Date.

For the purpose of determining the Redemption Amount, the “**Ending Value**” will be determined by the calculation agent and will equal the average, arithmetic mean, of the closing values of the Industrial 15 Index determined on each of the first five Calculation Days during the Calculation Period. If there are fewer than five Calculation Days during the Calculation Period, then the Ending Value will equal the average, arithmetic mean, of the closing values of the Industrial 15 Index on those Calculation Days. If there is only one Calculation Day during the Calculation Period, then the Ending Value will equal the closing value of the Industrial 15 Index on that Calculation Day. If no Calculation Days occur during the Calculation Period, then the Ending Value will equal the closing value of the Industrial 15 Index determined on the last scheduled Index Business Day in the Calculation Period, regardless of the occurrence of a Market Disruption Event on that day.

Table of Contents

The “**Calculation Period**” means the period from and including the seventh scheduled Index Business Day prior to the maturity date to and including the second scheduled Index Business Day prior to the maturity date.

A “**Calculation Day**” means any Index Business Day during the Calculation Period on which a Market Disruption Event has not occurred.

An “**Index Business Day**” means a day on which the New York Stock Exchange, the Nasdaq National Market and the AMEX are open for trading and the Industrial 15 Index or any successor index is calculated and published.

All determinations made by the calculation agent shall be at the sole discretion of the calculation agent and, absent a determination of a manifest error, shall be conclusive for all purposes and binding on ML&Co. and the holders and beneficial owners of the Notes.

Exchange of the Notes Prior to Maturity

You may elect to exchange all or a portion of the Notes you own during any Business Day which occurs in an Exchange Notice Period by giving notice as described below. An “Exchange Notice Period” means the period from and including the first calendar day of the month of July to and including 12:00 noon in The City of New York on the fifteenth calendar day during the month of July in the years 2004, 2005, 2006 and 2007. If the fifteenth calendar day of the applicable month of July is not a Business Day, then the Exchange Notice Period will be extended to 12:00 noon in The City of New York on the next succeeding Business Day. The amount of the cash payment you receive upon exchange (the “Exchange Amount”) will be equal to the Redemption Amount, calculated as if the Exchange Date were the stated maturity date, except that the Ending Value will be equal to the closing value of the Industrial 15 Index on the Exchange Date. An “Exchange Date” will be the third Index Business Day following the end of the applicable Exchange Notice Period. If a Market Disruption Event occurs on the third Index Business Day following an Exchange Notice Period, the Exchange Date for that year will be the next succeeding Index Business Day on which a Market Disruption Event does not occur. The Exchange Amount will be paid three Business Days after the Exchange Date.

The Notes will be issued in registered global form and will remain on deposit with the depository as described in the section entitled “Description of the Debt Securities—Depository” in the accompanying prospectus. Therefore, you must exercise the option to exchange your Notes through the depository. To make your exchange election effective, you must make certain that your notice is delivered to the depository during the applicable Exchange Notice Period. To ensure that the depository will receive timely notice of your election to exchange all or a portion of your Notes, you must instruct the direct or indirect participant through which you hold an interest in the Notes to notify the depository of your election to exchange your Notes prior to 12:00 noon in The City of New York on the last Business Day of the applicable Exchange Notice Period, in accordance with the then applicable operating procedures of the depository. Different firms have different deadlines for accepting instructions from their customers. You should consult the direct or indirect participant through which you hold an interest in the Notes to ascertain the deadline for ensuring that timely notice will be delivered to the depository.

If at any time the global securities are exchanged for Notes in definitive form, from and after that time, notice of your election to exchange must be delivered to JPMorgan Chase Bank, as trustee under the 1983 Indenture, through the procedures required by the trustee by 12:00 noon in The City of New York on the last day of the applicable Exchange Notice Period.

[Table of Contents](#)

Hypothetical Returns

The following tables illustrate for a range of hypothetical Ending Values of the Industrial 15 Index:

- the total amount payable at maturity of the Notes, and the total amount payable on an investment in the Industrial 15 Stocks,
- the total rate of return to beneficial owners of the Notes, and the total return on an investment in the Industrial 15 Stocks, and
- the pretax annualized rate of return to beneficial owners of the Notes, and the pretax annualized rate of return on an investment in the Industrial 15 Stocks.

The tables below assume an initial investment of \$10 in the Notes and an initial investment of \$10 in the Industrial 15 Stocks.

| Hypothetical Returns Related to Strategic Return Notes based on the Industrial 15 Index | | | | Hypothetical Returns Related to an Investment in the Industrial 15 Stocks | | | |
|--------------------------------------------------------------------------------------------|-------------------------------------------------------|-----------------------------------------|--------------------------------------------------------------|-------------------------------------------------------------------------------------------|-------------------------------------------|-----------------------------------------------------------|--------------------------------------------------------------------------------|
| Hypothetical Ending Value of the Industrial 15 Index (1) | Total Amount Payable at Maturity per Note | Total Rate of Return on the Notes | Pretax Annualized Rate of Return on the Notes(2) | Hypothetical Ending Value of an Investment in the Industrial 15 Stocks (3) | Total Amount Payable at Maturity | Total Rate of Return on the Industrial 15 Stocks | Pretax Annualized Rate of Return on the Industrial 15 Stocks(2) |
| 20.00 | \$ 1.91 | -80.92% | -30.50% | 21.56 | \$ 2.08 | -79.22% | -29.05% |
| 40.00 | \$ 3.82 | -61.84% | -18.35% | 43.12 | \$ 4.16 | -58.44% | -16.80% |
| 60.00 | \$ 5.72 | -42.75% | -10.84% | 64.68 | \$ 6.23 | -37.67% | -9.22% |
| 80.00 | \$ 7.63 | -23.67% | -5.32% | 86.24 | \$ 8.31 | -16.89% | -3.66% |
| 100.00 | \$ 9.54 | -4.59% | -0.94% | 107.80 | \$10.39 | 3.89% | 0.76% |
| 103.76(4) | \$ 9.90 | -1.00% | -0.20% | 111.85 | \$10.78 | 7.80% | 1.51% |
| 120.00 | \$11.45 | 14.49% | 2.72% | 129.36 | \$12.47 | 24.67% | 4.45% |
| 140.00 | \$13.36 | 33.58% | 5.87% | 150.92 | \$14.54 | 45.45% | 7.63% |
| 160.00 | \$15.27 | 52.66% | 8.63% | 172.48 | \$16.62 | 66.23% | 10.41% |
| 180.00 | \$17.17 | 71.74% | 11.10% | 194.04 | \$18.70 | 87.00% | 12.90% |
| 200.00 | \$19.08 | 90.82% | 13.34% | 215.59 | \$20.78 | 107.78% | 15.16% |
| 220.00 | \$20.99 | 109.91% | 15.38% | 237.15 | \$22.86 | 128.56% | 17.22% |
| 240.00 | \$22.90 | 128.99% | 17.26% | 258.71 | \$24.93 | 149.34% | 19.11% |
| 260.00 | \$24.81 | 148.07% | 19.00% | 280.27 | \$27.01 | 170.12% | 20.87% |
| 280.00 | \$26.72 | 167.15% | 20.63% | 301.83 | \$29.09 | 190.90% | 22.51% |

- (1) The Industrial 15 Index reflects the total return of the top fifteen dividend yielding Qualifying Stocks in the S&P Industrial Index, less an annual Index Adjustment Factor of 1.5%.
- (2) The annualized rates of return are calculated on a semiannual bond equivalent basis and assume an investment term from August 5, 2003 to August 5, 2008.
- (3) An investment in the Industrial 15 Stocks is assumed to be equivalent to an investment in the Industrial 15 Index, including the method and timing of reinvesting dividends, except that the Industrial 15 Index is reduced daily by the pro rata portion of the annual Index Adjustment Factor of 1.5%. The hypothetical investment in the Industrial 15 Stocks presented in this column does not take into account transaction costs and taxes.
- (4) This is the Starting Value.

The above figures are for purposes of illustration only. The actual Redemption Amount received by investors in the Notes and the resulting total and pretax annualized rates of return will depend on the actual Ending Value and term of your investment.

[Table of Contents](#)

Adjustments to the Industrial 15 Index; Market Disruption Events

If at any time the AMEX changes its method of calculating the Industrial 15 Index, or the value of the Industrial 15 Index changes, in any material respect, or if the Industrial 15 Index is in any other way modified so that the Industrial 15 Index does not, in the opinion of the calculation agent, fairly represent the value of the Industrial 15 Index had those changes or modifications not been made, then, from and after that time, the calculation agent shall, at the close of business in New York, New York, on each date that the closing value of the Industrial 15 Index is to be calculated, make those adjustments as, in the good faith judgment of the calculation agent, may be necessary in order to arrive at a calculation of a value of a stock index comparable to the Industrial 15 Index as if those changes or modifications had not been made, and calculate the closing value with reference to the Industrial 15 Index, as so adjusted. Accordingly, if the method of calculating the Industrial 15 Index is modified so that the value of the Industrial 15 Index is a fraction or a multiple of what it would have been if it had not been modified, e.g., due to a split, then the calculation agent shall adjust the Industrial 15 Index in order to arrive at a value of the Industrial 15 Index as if it had not been modified, e.g., as if a split had not occurred.

“**Market Disruption Event**” means either of the following events as determined by the calculation agent:

- (A) the suspension of or material limitation on trading for more than two hours of trading, or during the one-half hour period preceding the close of trading, on the applicable exchange (without taking into account any extended or after-hours trading session), in one or more of the Industrial 15 Stocks, or the stocks included in any successor index; or
- (B) the suspension of or material limitation on trading, in each case, for more than two hours of trading, or during the one-half hour period preceding the close of trading, on the applicable exchange (without taking into account any extended or after-hours trading session), whether by reason of movements in price otherwise exceeding levels permitted by the relevant exchange or otherwise, in option contracts or futures contracts related to the Industrial 15 Stocks, or the stocks included in any successor index, which are traded on any major U.S. exchange.

For the purpose of the above definition:

- (1) a limitation on the hours in a trading day and/or number of days of trading will not constitute a Market Disruption Event if it results from an announced change in the regular business hours of the relevant exchange, and
- (2) for the purpose of clause (A) above, any limitations on trading during significant market fluctuations under NYSE Rule 80A, or any applicable rule or regulation enacted or promulgated by the NYSE or any other self regulatory organization or the SEC of similar scope as determined by the calculation agent, will be considered “material”.

As a result of the terrorist attacks, the financial markets were closed from September 11, 2001 through September 14, 2001 and values of the Industrial 15 Index are not available for such dates. Such market closures would have constituted Market Disruption Events.

Discontinuance of the Industrial 15 Index

If the AMEX discontinues publication of the Industrial 15 Index and the AMEX or another entity publishes a successor or substitute index that the calculation agent determines, in its sole discretion, to be comparable to the Industrial 15 Index (a “successor index”), then, upon the calculation agent’s notification of any determination to the trustee and ML&Co., the calculation agent will substitute the successor index as calculated by the AMEX or any other entity for the Industrial 15 Index and calculate the closing value as described above

Table of Contents

under “—Payment at Maturity”. Upon any selection by the calculation agent of a successor index, ML&Co. shall cause notice to be given to holders of the Notes.

In the event that the AMEX discontinues publication of the Industrial 15 Index and:

- the calculation agent does not select a successor index, or
- the successor index is no longer published on any of the Calculation Days,

the calculation agent will compute a substitute value for the Industrial 15 Index in accordance with the procedures last used to calculate the Industrial 15 Index before any discontinuance. If a successor index is selected or the calculation agent calculates a value as a substitute for the Industrial 15 Index as described below, the successor index or value will be used as a substitute for the Industrial 15 Index for all purposes, including for purposes of determining whether a Market Disruption Event exists.

If the AMEX discontinues publication of the Industrial 15 Index before the period during which the Redemption Amount is to be determined and the calculation agent determines that no successor index is available at that time, then on each Business Day until the earlier to occur of:

- the determination of the Ending Value, or
- a determination by the calculation agent that a successor index is available,

the calculation agent will determine the value that would be used in computing the Redemption Amount as described in the preceding paragraph as if that day were a Calculation Day. The calculation agent will cause notice of each value to be published not less often than once each month in *The Wall Street Journal* (the “WSJ”) or another newspaper of general circulation, and arrange for information with respect to these values to be made available by telephone.

A “**Business Day**” is any day on which the NYSE, the Nasdaq National Market and the AMEX are open for trading.

Notwithstanding these alternative arrangements, discontinuance of the publication of the Industrial 15 Index may adversely affect trading in the Notes.

Events of Default and Acceleration

In case an Event of Default with respect to any Notes has occurred and is continuing, the amount payable to a beneficial owner of a Note upon any acceleration permitted by the Notes, with respect to each Unit, will be equal to the Redemption Amount, if any, calculated as though the date of early repayment were the stated maturity date of the Notes. See the section entitled “—Payment at Maturity” in this prospectus supplement. If a bankruptcy proceeding is commenced in respect of ML&Co., the claim of the beneficial owner of a Note may be limited, under Section 502(b)(2) of Title 11 of the United States Code, to the original public offering price of the Note plus an additional amount of contingent interest calculated as though the date of the commencement of the proceeding was the maturity date of the Notes.

In case of default in payment of the Notes, whether at their stated maturity or upon exchange or acceleration, from and after that date the Notes will bear interest, payable upon demand of their beneficial owners, at the rate of 1.32% per year to the extent that payment of any interest is legally enforceable on the unpaid amount due and payable on that date in accordance with the terms of the Notes to the date payment of that amount has been made or duly provided for.

THE INDUSTRIAL 15 INDEX

Industrial 15 Index

The value of the Industrial 15 Index is calculated and disseminated by the AMEX under the symbol "IXD". On any Business Day, the value of the Industrial 15 Index equals (i) the sum of the products of the current market price for each of the Industrial 15 Stocks and the applicable share multiplier (the sum equals the "Industrial 15 Portfolio Value"), plus (ii) an amount reflecting Current Quarter Dividends (as defined below), and less (iii) a pro rata portion of the annual Index Adjustment Factor. The Index Adjustment Factor is 1.5% per annum and reduces the value of the Industrial 15 Index each day by the pro rata amount. As of July 30, 2003, the index divisor for the Industrial 15 Index was 1.03189601924843. The AMEX generally calculates and disseminates the value of the Industrial 15 Index based on the most recently reported prices of the Industrial 15 Stocks (as reported by the exchange or trading system on which the Industrial 15 Stocks are listed or traded), at approximately 15-second intervals during the AMEX's business hours and at the end of each Index Business Day via the Consolidated Tape Association's Network B.

Initial Determination of Industrial 15 Portfolio

At any time the "Industrial 15 Portfolio" consists of the then current Industrial 15 Stocks. The stocks currently included in the Industrial 15 Portfolio and their respective Dividend Yields are shown below. The stocks included in the Industrial 15 Portfolio have been determined by the AMEX to be the fifteen Qualifying Stocks in the S&P Industrial Index having the highest Dividend Yield on June 24, 2003. A "Qualifying Stock" is any stock from the S&P Industrial Index that is in the top 75% of the stocks, as measured by market capitalization, after the elimination of (i) stocks included in the Dow Jones Industrial Average and (ii) stocks that do not have an S&P Common Stock Ranking of A or A+. We have included a brief description of each of the Industrial 15 Companies and historical stock price information for the Industrial 15 Stocks in Annex A to this prospectus supplement. "Dividend Yield" for each common stock is determined by annualizing the last quarterly or semi-annual ordinary cash dividend for which the ex-dividend date has occurred, excluding any extraordinary dividend, and dividing the result by the last available sale price for each stock on its primary exchange on the date that Dividend Yield is to be determined.

| Company | Dividend Yield(1) | Share Multiplier(1) |
|--------------------------------|-------------------|---------------------|
| Abbott Laboratories | 2.49% | 0.16019 |
| Albertson's, Inc. | 4.06% | 0.36261 |
| Anheuser-Busch Companies Inc. | 1.69% | 0.14045 |
| Bristol-Myers Squibb Company | 4.23% | 0.25596 |
| The Clorox Company | 2.48% | 0.16600 |
| ConAgra Foods, Inc. | 4.28% | 0.30167 |
| Colgate-Palmolive Company | 1.74% | 0.12311 |
| Emerson Electric Co. | 2.98% | 0.13726 |
| Ingersoll-Rand Company Limited | 1.27% | 0.14992 |
| Johnson Controls, Inc. | 1.50% | 0.08281 |
| Paychex, Inc. | 1.41% | 0.23853 |
| Pfizer Inc. | 1.80% | 0.19944 |
| Rohm and Haas Company | 2.52% | 0.22514 |
| Schering-Plough Corporation | 3.97% | 0.37181 |
| Wm. Wrigley Jr. Company | 1.60% | 0.12618 |

(1) As of July 30, 2003.

The Dividend Yield on the Industrial 15 Stocks as of July 30, 2003 was 2.41%. The Share Multipliers indicated above were calculated by the AMEX on June 26, 2003, the anniversary of the date the Industrial 15

Table of Contents

Index was originally calculated and disseminated. Each Share Multiplier equaled the number of shares of that Industrial 15 Stock, or portion thereof, based upon the closing market price of that stock on June 26, 2003, so that each stock represented approximately an equal percentage of the Industrial 15 Index as of June 26, 2003. Each Share Multiplier remains constant until adjusted for certain corporate events, quarterly dividend adjustments and annual reconstitutions as described below. The last adjustment to the Share Multipliers took place on June 26, 2003.

Annual Industrial 15 Portfolio Reconstitution

As of the close of business on each Anniversary Date through the Anniversary Date in 2007, the Industrial 15 Portfolio shall be reconstituted to include the fifteen Qualifying Stocks in the S&P Industrial Index having the highest Dividend Yield (the "New Stocks") on the second scheduled Index Business Day prior to the applicable Anniversary Date (the "Annual Determination Date"). "Anniversary Date" shall mean June 26th of each year, which is the anniversary of the date the Industrial 15 Index was originally calculated and disseminated; provided, however, that if the date is not an Index Business Day or a Market Disruption Event occurs on that date, then the Anniversary Date for that year shall mean the immediately succeeding Index Business Day on which a Market Disruption Event does not occur. The AMEX will only add a stock having characteristics as of the applicable Annual Determination Date that will permit the Industrial 15 Index to remain within the criteria specified in the rules of the AMEX and within the applicable rules of the Securities and Exchange Commission. The criteria and rules will apply only on an Annual Determination Date to exclude a proposed New Stock. If a proposed New Stock does not meet these criteria or rules, the AMEX will replace it with the Qualifying Stock with the next highest Dividend Yield which meets the rules and criteria. These criteria currently provide, among other things, (1) that each component stock must have a minimum market value of at least \$75 million, except that up to 10% of the component securities in the Industrial 15 Index may have a market value of \$50 million; (2) that each component stock must have an average monthly trading volume in the preceding six months of not less than 1,000,000 shares, except that up to 10% of the component stocks in the Industrial 15 Index may have an average monthly trading volume of 500,000 shares or more in the last six months; (3) 90% of the Industrial 15 Index's numerical index value and at least 80% of the total number of component stocks will meet the then current criteria for standardized option trading set forth in the rules of the AMEX and (4) all component stocks will either be listed on the AMEX, the NYSE, or traded through the facilities of the National Association of Securities Dealers Automated Quotation System and reported as National Market System Securities.

The "Share Multiplier" for each New Stock will be determined by the AMEX and will equal the number of shares of each New Stock, based upon the closing market price of that New Stock on the Anniversary Date, so that each New Stock represents approximately an equal percentage of a value equal to the Industrial 15 Index in effect at the close of business on the applicable Anniversary Date. As an example, if the Industrial 15 Index in effect at the close of business on an Anniversary Date equaled 150, then each of the fifteen New Stocks would be allocated a portion of the value of the Industrial 15 Index equal to 10 and if, the closing market price of a New Stock on the Anniversary Date was 20, the applicable Share Multiplier would be 0.5. If the Industrial 15 Index equaled 60, then each of the fifteen New Stocks would be allocated a portion of the value of the Industrial 15 Index equal to 4 and if the closing market price of a New Stock on the Anniversary Date was 20, the applicable Share Multiplier would be 0.2.

S&P Industrial Index

The S&P Industrial Index is a subset of the S&P 500 Index made up of the companies in the S&P 500 Index that are considered industrial companies. The S&P 500 Index is published by Standard & Poor's, a division of The McGraw-Hill Companies, Inc. and is intended to provide an indication of the pattern of common stock price movement. The value of the S&P 500 Index is based on the relative value of the aggregate market value of the common stocks of 500 companies as of a particular time compared to the aggregate average market value of

Table of Contents

the common stocks of 500 similar companies during the base period of the years 1941 through 1943. Companies included in the S&P 500 Index are assigned to differing sectors based upon the company's principal business activities.

Dividends

As described above, the value of the Industrial 15 Index will include an amount reflecting Current Quarter Dividends. "Current Quarter Dividends" for any day will be determined by the AMEX and will equal the sum of the products for each Industrial 15 Stock of the cash dividend paid by an issuer on one share of stock during the Current Quarter multiplied by the Share Multiplier applicable to that stock on the ex-dividend date. "Current Quarter" shall mean the calendar quarter containing the day for which the applicable Current Quarter Dividends are being determined. As of July 30, 2003, Current Quarter Dividends, as obtained from the AMEX, amounted to \$0.418286975. This amount, along with any other Current Quarter Dividends accumulated through and including September 30, 2003, will be allocated to the Industrial 15 Stocks prior to the opening of trading on October 1, 2003 as described below.

As of the first day of the start of each calendar quarter, the AMEX will allocate the Current Quarter Dividends as of the end of the immediately preceding calendar quarter to each then outstanding Industrial 15 Stock. The amount of the Current Quarter Dividends allocated to each Industrial 15 Stock will equal the percentage of the value of each Industrial 15 Stock contained in the Industrial 15 Portfolio relative to the value of the entire Industrial 15 Portfolio based on the closing market price on the last Index Business Day in the immediately preceding calendar quarter. The Share Multiplier of each outstanding Industrial 15 Stock will be increased to reflect the number of shares, or portion of a share, that the amount of the Current Quarter Dividend allocated to such Industrial 15 Stock can purchase of each such Industrial 15 Stock based on the closing market price on the last Index Business Day in the immediately preceding calendar quarter.

Adjustments to the Share Multiplier and Industrial 15 Portfolio

The Share Multiplier for any Industrial 15 Stock and the Industrial 15 Portfolio will be adjusted as follows:

1. If an Industrial 15 Stock is subject to a stock split or reverse stock split, then once the split has become effective, the Share Multiplier for that Industrial 15 Stock will be adjusted to equal the product of the number of shares of that Industrial 15 Stock issued in the split and the prior multiplier.
2. If an Industrial 15 Stock is subject to a stock dividend, issuance of additional shares of the Industrial 15 Stock, that is given equally to all holders of shares of the issuer of that Industrial 15 Stock, then once the dividend has become effective and that Industrial 15 Stock is trading ex-dividend, the Share Multiplier will be adjusted so that the new Share Multiplier shall equal the former Share Multiplier plus the product of the number of shares of that Industrial 15 Stock issued with respect to one such share of that Industrial 15 Stock and the prior multiplier.
3. If an Industrial 15 Company is being liquidated or is subject to a proceeding under any applicable bankruptcy, insolvency or other similar law, that Industrial 15 Stock will continue to be included in the Industrial 15 Portfolio so long as a market price for that Industrial 15 Stock is available. If a market price is no longer available for an Industrial 15 Stock for whatever reason, including the liquidation of the issuer of the Industrial 15 Stock or the subjection of the issuer of the Industrial 15 Stock to a proceeding under any applicable bankruptcy, insolvency or other similar law, then the value of that Industrial 15 Stock will equal zero in connection with calculating the Industrial 15 Portfolio Value for so long as no market price is available, and no attempt will be made to immediately find a replacement stock or increase the value of the Industrial 15 Portfolio to compensate for the deletion of that Industrial 15 Stock. If a market price is no longer available for an Industrial

Table of Contents

15 Stock as described above, the Industrial 15 Portfolio Value will be computed based on the remaining Industrial 15 Stocks for which market prices are available and no new stock will be added to the Industrial 15 Portfolio until the annual reconstitution of the Industrial 15 Portfolio. As a result, there may be periods during which the Industrial 15 Portfolio contains fewer than fifteen Industrial 15 Stocks.

4. If an Industrial 15 Company has been subject to a merger or consolidation and is not the surviving entity or is nationalized, then a value for that Industrial 15 Stock will be determined at the time the issuer is merged or consolidated or nationalized and will equal the last available market price for that Industrial 15 Stock and that value will be constant until the Industrial 15 Portfolio is reconstituted. At that time, no adjustment will be made to the Share Multiplier of the relevant Industrial 15 Stock.

5. If an Industrial 15 Company issues to all of its shareholders equity securities that are publicly traded of an issuer other than the Industrial 15 Company, or a tracking stock is issued by an Industrial 15 Company to all of its shareholders, then the new equity securities will be added to the Industrial 15 Portfolio as a new Industrial 15 Stock. The Share Multiplier for the new Industrial 15 Stock will equal the product of the original Share Multiplier with respect to the Industrial 15 Stock for which the new Industrial 15 Stock is being issued (the "Original Industrial 15 Stock") and the number of shares of the new Industrial 15 Stock issued with respect to one share of the Original Industrial 15 Stock.

No adjustments of any Share Multiplier of an Industrial 15 Stock will be required unless the adjustment would require a change of at least 1% in the Share Multiplier then in effect. The Share Multiplier resulting from any of the adjustments specified above will be rounded to the nearest ten-thousandth with five hundred-thousandths being rounded upward.

The AMEX expects that no adjustments to the Share Multiplier of any Industrial 15 Stock or to the Industrial 15 Portfolio will be made other than those specified above; however, the AMEX may at its discretion make adjustments to maintain the value of the Industrial 15 Index if certain events would otherwise alter the value of the Industrial 15 Index despite no change in the market prices of the Industrial 15 Stocks.

Historical Data on the Industrial 15 Index

Actual Historical Data

The Industrial 15 Index was originally calculated and disseminated on June 26, 2001 with an initial value of 100. The following chart sets forth the actual month-end closing levels of the Industrial 15 Index from June 2001 through June 2003. Any historical upward or downward trend in the level of the Industrial 15 Index during this period is not any indication that the Industrial 15 Index is more or less likely to increase or decrease at any time during the term of the Notes. All historical data presented in the following chart were calculated by the AMEX.

| | <u>2001</u> | <u>2002</u> | <u>2003</u> |
|-----------|-------------|-------------|-------------|
| January | | 107.83 | 95.54 |
| February | | 111.40 | 92.21 |
| March | | 112.00 | 92.69 |
| April | | 108.60 | 99.17 |
| May | | 111.24 | 103.88 |
| June | 100.67 | 105.76 | 102.31 |
| July | 102.48 | 102.32 | |
| August | 104.12 | 103.32 | |
| September | 96.35 | 94.44 | |
| October | 98.19 | 99.71 | |
| November | 105.85 | 105.97 | |
| December | 106.46 | 100.95 | |

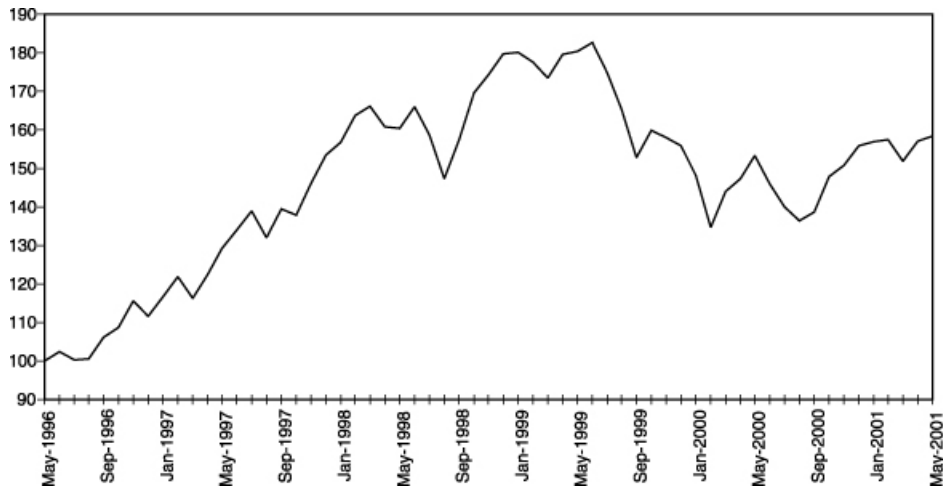
[Table of Contents](#)

Hypothetical Historical Data

The following table sets forth the hypothetical level of the Industrial 15 Index at the end of each month (the “Hypothetical Historical Month-End Closing Level”), in the period from May 1996 through May 2001 calculated as if the Industrial 15 Index had existed during that period. All hypothetical historical data presented in the following table were calculated by the AMEX. The closing levels have been calculated hypothetically on the same basis that the Industrial 15 Index is currently calculated. The Hypothetical Historical Month-End Closing Level was set to 100 on May 31, 1996 to provide an illustration of past movements of the Hypothetical Historical Month-End Closing Level only. We have provided this historical information to help you evaluate the behavior of the Industrial 15 Index in various economic environments; however, these hypothetical historical data on the Industrial 15 Index are not necessarily indicative of the future performance of the Industrial 15 Index or what the value of the Notes may be. Any historical upward or downward trend in the level of the Industrial 15 Index during any period set forth below is not any indication that the Industrial 15 Index is more or less likely to increase or decrease at any time during the term of the Notes.

| | 1996 | 1997 | 1998 | 1999 | 2000 | 2001 |
|-----------|--------|--------|--------|--------|--------|--------|
| January | | 116.66 | 156.88 | 180.23 | 148.16 | 156.96 |
| February | | 121.94 | 163.76 | 177.61 | 134.75 | 157.47 |
| March | | 116.35 | 166.13 | 173.50 | 144.08 | 151.86 |
| April | | 122.42 | 160.81 | 179.67 | 147.40 | 157.06 |
| May | 100.00 | 129.24 | 160.45 | 180.42 | 153.39 | 158.44 |
| June | 102.43 | 133.98 | 166.00 | 182.75 | 146.02 | |
| July | 100.27 | 138.89 | 158.69 | 174.86 | 139.99 | |
| August | 100.53 | 132.00 | 147.36 | 165.36 | 136.43 | |
| September | 106.19 | 139.56 | 157.49 | 152.86 | 138.76 | |
| October | 108.67 | 137.94 | 169.59 | 159.93 | 147.94 | |
| November | 115.62 | 146.17 | 174.35 | 158.64 | 150.78 | |
| December | 111.65 | 153.56 | 179.81 | 155.87 | 155.93 | |

The following graph sets forth the hypothetical historical performance of the Industrial 15 Index presented in the table above. Past movements of the Industrial 15 Index are not necessarily indicative of the future Industrial 15 Index values.



UNITED STATES FEDERAL INCOME TAXATION

The following discussion is based upon the opinion of Sidley Austin Brown & Wood LLP, counsel to ML&Co. (“Tax Counsel”). As the law applicable to the U.S. federal income taxation of instruments such as the Notes is technical and complex, the discussion below necessarily represents only a general summary. The following summary is based upon laws, regulations, rulings and decisions now in effect, all of which are subject to change (including changes in effective dates) or possible differing interpretations. It deals only with Notes held as capital assets and does not purport to deal with persons in special tax situations, such as financial institutions, insurance companies, regulated investment companies, dealers in securities or currencies, persons holding Notes as a hedge against currency risks, as a position in a “straddle” or as part of a “hedging” or “conversion” transaction for tax purposes, or persons whose functional currency is not the United States dollar. It also does not deal with holders other than original purchasers (except where otherwise specifically noted). Persons considering the purchase of the Notes should consult their own tax advisors concerning the application of U.S. federal income tax laws to their particular situations as well as any consequences of the purchase, ownership and disposition of the Notes arising under the laws of any other taxing jurisdiction.

As used herein, the term “U.S. Holder” means a beneficial owner of a Note that is for U.S. federal income tax purposes (i) a citizen or resident of the United States, (ii) a corporation or a partnership (including an entity treated as a corporation or a partnership for U.S. federal income tax purposes) created or organized in or under the laws of the United States, any state thereof or the District of Columbia (unless, in the case of a partnership, Treasury regulations are adopted that provide otherwise), (iii) an estate whose income is subject to U.S. federal income tax regardless of its source, (iv) a trust if a court within the United States is able to exercise primary supervision over the administration of the trust and one or more United States persons have the authority to control all substantial decisions of the trust, or (v) any other person whose income or gain in respect of a Note is effectively connected with the conduct of a United States trade or business. Certain trusts not described in clause (iv) above in existence on August 20, 1996, that elect to be treated as United States persons will also be U.S. Holders for purposes of the following discussion. As used herein, the term “Non-U.S. Holder” means a beneficial owner of a Note that is not a U.S. Holder.

General

There are no statutory provisions, regulations, published rulings or judicial decisions addressing or involving the characterization and treatment, for U.S. federal income tax purposes, of the Notes or securities with terms substantially the same as the Notes. Accordingly, the proper U.S. federal income tax characterization and treatment of the Notes is uncertain. Pursuant to the terms of the Notes, ML&Co. and every holder of a Note agree (in the absence of an administrative determination or judicial ruling to the contrary) to characterize the Notes for all tax purposes as a pre-paid cash-settled forward contract linked to the value of the Industrial 15 Index. In the opinion of Tax Counsel, such characterization and tax treatment of the Notes, although not the only reasonable characterization and tax treatment, is based on reasonable interpretations of law currently in effect and, even if successfully challenged by the Internal Revenue Service (the “IRS”), will not result in the imposition of penalties. The treatment of the Notes described above is not, however, binding on the IRS or the courts. No statutory, judicial or administrative authority directly addresses the characterization of the Notes or instruments similar to the Notes for U.S. federal income tax purposes, and no ruling is being requested from the IRS with respect to the Notes.

Due to the absence of authorities that directly address instruments that are similar to the Notes, significant aspects of the U.S. federal income tax consequences of an investment in the Notes are not certain, and no assurance can be given that the IRS or the courts will agree with the characterization described above. Accordingly, prospective purchasers are urged to consult their own tax advisors regarding the U.S. federal income tax consequences of an investment in the Notes (including alternative characterizations of the Notes) and with respect to any tax consequences arising under the laws of any state, local or foreign taxing jurisdiction.

[Table of Contents](#)

Unless otherwise stated, the following discussion is based on the assumption that the treatment described above is accepted for U.S. federal income tax purposes.

Tax Treatment of the Notes

Assuming the characterization of the Notes as set forth above, Tax Counsel believes that the following U.S. federal income tax consequences should result.

Tax Basis. A U.S. Holder's tax basis in a Note will equal the amount paid by the U.S. Holder to acquire the Note.

Payment on the Maturity Date. Upon the receipt of cash at maturity of the Notes, a U.S. Holder will recognize gain or loss. The amount of such gain or loss will be the extent to which the amount of the cash received differs from the U.S. Holder's tax basis in the Note. It is uncertain whether any such gain or loss would be treated as ordinary income or loss or capital gain or loss. Absent a future clarification in current law (by an administrative determination or judicial ruling), where required, ML&Co. intends to report any such gain or loss to the IRS in a manner consistent with the treatment of such gain or loss as capital gain or loss. If such gain or loss is treated as capital gain or loss, then any such gain or loss will generally be long-term capital gain or loss, as the case may be, if the U.S. Holder held the Note for more than one year at maturity. The deductibility of capital losses is subject to certain limitations.

Sale or Exchange of the Notes. Upon a sale or exchange of a Note prior to the maturity of the Notes, a U.S. Holder will generally recognize capital gain or loss equal to the difference between the amount realized on such sale or exchange and such U.S. Holder's tax basis in the Note so sold or exchanged. Capital gain or loss will generally be long-term capital gain or loss if the U.S. Holder held the Note for more than one year at the time of disposition. As discussed above, the deductibility of capital losses is subject to certain limitations.

Possible Alternative Tax Treatments of an Investment in the Notes

Due to the absence of authorities that directly address the proper characterization of the Notes, no assurance can be given that the IRS will accept, or that a court will uphold, the characterization and tax treatment described above. In particular, the IRS could seek to analyze the U.S. federal income tax consequences of owning the Notes under Treasury regulations governing contingent payment debt instruments (the "Contingent Payment Regulations").

If the IRS were successful in asserting that the Contingent Payment Regulations applied to the Notes, the timing and character of income thereon would be significantly affected. Among other things, a U.S. Holder would be required to accrue original issue discount on the Notes every year at a "comparable yield" for us, determined at the time of issuance of the Notes. Furthermore, any gain realized at maturity or upon a sale or other disposition of the Notes would generally be treated as ordinary income, and any loss realized at maturity would be treated as ordinary loss to the extent of the U.S. Holder's prior accruals of original issue discount and capital loss thereafter.

Even if the Contingent Payment Regulations do not apply to the Notes, other alternative U.S. federal income tax characterizations or treatments of the Notes may also be possible, and if applied could also affect the timing and the character of the income or loss with respect to the Notes. Accordingly, prospective purchasers are urged to consult their tax advisors regarding the U.S. federal income tax consequences of an investment in the Notes.

Table of Contents

Non-U.S. Holders

Based on the treatment of each Note as a pre-paid cash-settled forward contract linked to the value of the Industrial 15 Index, in the case of a non-U.S. Holder, a payment made with respect to a Note on the maturity date or upon exchange will not be subject to United States withholding tax, provided that such non-U.S. Holder complies with applicable certification requirements and that such payments are not effectively connected with a United States trade or business of such non-U.S. Holder. Any capital gain realized upon the sale, exchange or other disposition of a Note by a non-U.S. Holder will generally not be subject to U.S. federal income tax if (i) such gain is not effectively connected with a United States trade or business of such non-U.S. Holder and (ii) in the case of an individual non-U.S. Holder, such individual is not present in the United States for 183 days or more in the taxable year of the sale or other disposition, or the gain is not attributable to a fixed place of business maintained by such individual in the United States, and such individual does not have a “tax home” (as defined for U.S. federal income tax purposes) in the United States.

As discussed above, alternative characterizations of the Notes for U.S. federal income tax purposes are possible. Should an alternative characterization of the Notes, by reason of a change or clarification of the law, by regulation or otherwise, cause payments with respect to the Notes to become subject to withholding tax, ML&Co. will withhold tax at the applicable statutory rate. Prospective non-U.S. Holders of the Notes should consult their own tax advisors in this regard.

Backup Withholding and Information Reporting

A beneficial owner of a Note may be subject to information reporting and to backup withholding at the applicable statutory rate of U.S. federal income tax on certain amounts paid to the beneficial owner unless such beneficial owner provides proof of an applicable exemption or a correct taxpayer identification number, and otherwise complies with applicable requirements of the backup withholding rules.

Any amounts withheld under the backup withholding rules from a payment to a beneficial owner would be allowed as a refund or a credit against such beneficial owner’s U.S. federal income tax provided the required information is furnished to the IRS.

ERISA CONSIDERATIONS

Each fiduciary of a pension, profit-sharing or other employee benefit plan (a “plan”) subject to the Employee Retirement Income Security Act of 1974, as amended (“ERISA”), should consider the fiduciary standards of ERISA in the context of the plan’s particular circumstances before authorizing an investment in the Notes. Accordingly, among other factors, the fiduciary should consider whether the investment would satisfy the prudence and diversification requirements of ERISA and would be consistent with the documents and instruments governing the plan, and whether the investment would involve a prohibited transaction under Section 406 of ERISA or Section 4975 of the Internal Revenue Code (the “Code”).

Section 406 of ERISA and Section 4975 of the Code prohibit plans, as well as individual retirement accounts and Keogh plans subject to Section 4975 of the Internal Revenue Code (also “plans”) from engaging in certain transactions involving “plan assets” with persons who are “parties in interest” under ERISA or “disqualified persons” under the Code (“parties in interest”) with respect to the plan or account. A violation of these prohibited transaction rules may result in civil penalties or other liabilities under ERISA and/or an excise tax under Section 4975 of the Code for those persons, unless exemptive relief is available under an applicable statutory, regulatory or administrative exemption. Certain employee benefit plans and arrangements including those that are governmental plans (as defined in section 3(32) of ERISA), certain church plans (as defined in Section 3(33) of ERISA) and foreign plans (as described in Section 4(b)(4) of ERISA) (“non-ERISA arrangements”) are not subject to the requirements of ERISA or Section 4975 of the Code but may be subject to similar provisions under applicable federal, state, local, foreign or other regulations, rules or laws (“similar laws”).

Table of Contents

The acquisition of the Notes by a plan with respect to which we, MLPF&S, or certain of our affiliates is or becomes a party in interest may constitute or result in prohibited transaction under ERISA or Section 4975 of the Code, unless those Notes are acquired pursuant to and in accordance with an applicable exemption. The U.S. Department of Labor has issued five prohibited transaction class exemptions, or "PTCEs", that may provide exemptive relief if required for direct or indirect prohibited transactions that may arise from the purchase or holding of the Notes. These exemptions are:

- (1) PTCE 84-14, an exemption for certain transactions determined or effected by independent qualified professional asset managers;
- (2) PTCE 90-1, an exemption for certain transactions involving insurance company pooled separate accounts;
- (3) PTCE 91-38, an exemption for certain transactions involving bank collective investment funds;
- (4) PTCE 95-60, an exemption for transactions involving certain insurance company general accounts; and
- (5) PTCE 96-23, an exemption for plan asset transactions managed by in-house asset managers.

The Notes may not be purchased or held by (1) any plan, (2) any entity whose underlying assets include "plan assets" by reason of any plan's investment in the entity (a "plan asset entity") or (3) any person investing "plan assets" of any plan, unless in each case the purchaser or holder is eligible for the exemptive relief available under one or more of the PTCEs listed above or another applicable similar exemption. Any purchaser or holder of the Notes or any interest in the Notes will be deemed to have represented by its purchase and holding of the Notes that it either (1) is not a plan or a plan asset entity and is not purchasing those Notes on behalf of or with "plan assets" of any plan or plan asset entity or (2) with respect to the purchase or holding, is eligible for the exemptive relief available under any of the PTCEs listed above or another applicable exemption. In addition, any purchaser or holder of the Notes or any interest in the Notes which is a non-ERISA arrangement will be deemed to have represented by its purchase and holding of the Notes that its purchase and holding will not violate the provisions of any similar law.

Due to the complexity of these rules and the penalties that may be imposed upon persons involved in non-exempt prohibited transactions, it is important that fiduciaries or other persons considering purchasing the Notes on behalf of or with "plan assets" of any plan, plan asset entity or non-ERISA arrangement consult with their counsel regarding the availability of exemptive relief under any of the PTCEs listed above or any other applicable exemption, or the potential consequences of any purchase or holding under similar laws, as applicable.

USE OF PROCEEDS AND HEDGING

The net proceeds from the sale of the Notes will be used as described under "Use of Proceeds" in the accompanying prospectus and to hedge market risks of ML&Co. associated with its obligation to pay the Redemption Amount or Exchange Amount.

WHERE YOU CAN FIND MORE INFORMATION

We file reports, proxy statements and other information with the SEC. Our SEC filings are also available over the Internet at the SEC's web site at <http://www.sec.gov>. The address of the SEC's Internet site is provided solely for the information of prospective investors and is not intended to be an active link. You may also read and copy any document we file at the SEC's public reference rooms in Washington, D.C. and New York, New York. Please call the SEC at 1-800-SEC-0330 for more information on the public reference rooms and their copy charges. You may also inspect our SEC reports and other information at the New York Stock Exchange, Inc., 20 Broad Street, New York, New York 10005.

[Table of Contents](#)

We have filed a registration statement on Form S-3 with the SEC covering the Notes and other securities. For further information on ML&Co. and the Notes, you should refer to our registration statement and its exhibits. The prospectus accompanying this prospectus supplement summarizes material provisions of contracts and other documents that we refer you to. Because the prospectus may not contain all the information that you may find important, you should review the full text of these documents. We have included copies of these documents as exhibits to our registration statement.

You should rely only on the information contained or incorporated by reference in this prospectus supplement and the accompanying prospectus. We have not, and the underwriter has not, authorized any other person to provide you with different information. If anyone provides you with different or inconsistent information, you should not rely on it. We are not, and the underwriter is not, making an offer to sell these securities in any jurisdiction where the offer or sale is not permitted.

You should assume that the information appearing in this prospectus supplement and the accompanying prospectus is accurate as of the date on the front cover of this prospectus supplement only. Our business, financial condition and results of operations may have changed since that date.

UNDERWRITING

MLPF&S has agreed, subject to the terms and conditions of the underwriting agreement and a terms agreement, to purchase from ML&Co. \$25,000,000 aggregate original public offering price of Notes. The underwriting agreement provides that the obligations of the underwriter are subject to certain conditions and that the underwriter will be obligated to purchase all of the Notes if any are purchased. ML&Co. has entered into an arrangement with one of its subsidiaries to hedge the market risks associated with ML&Co.'s obligation to pay amounts due at maturity on the Notes. In connection with the arrangement, this subsidiary will pay MLPF&S, the underwriter, \$.10 per Unit as part of the underwriting fee.

The Notes are ineligible assets in MLPF&S' asset-based brokerage service Unlimited Advantage, which means that purchasers will not pay Unlimited Advantage annual asset-based fees on the Notes but will pay commissions on any secondary market purchases and sales of the Notes.

The underwriter has advised ML&Co. that it proposes initially to offer all or part of the Notes directly to the public at the offering price set forth on the cover page of this prospectus supplement. After the initial public offering, the public offering price may be changed. The underwriter is offering the Notes subject to receipt and acceptance and subject to the underwriter's right to reject any order in whole or in part. Proceeds to be received by ML&Co. will be net of the underwriting fee and expenses payable by ML&Co.

In addition to the compensation paid at the time of the original sale of the Notes, the underwriter will pay an additional amount on each anniversary of the Pricing Date in 2004 through 2007 to brokers whose client accounts purchased the Units in the initial distribution and who continue to hold their Notes. This additional amount will equal 1% per Unit based on the Redemption Amount of the Notes calculated as if the applicable anniversary of the Pricing Date is the maturity date and the Ending Value is equal to the closing value of the Industrial 15 Index on that date. Also, MLPF&S may from time to time pay additional amounts to brokers whose client accounts purchased Notes in the secondary market and continue to hold those Notes.

MLPF&S, a broker-dealer subsidiary of ML&Co., is a member of the National Association of Securities Dealers, Inc. and will participate in distributions of the Notes. Accordingly, offerings of the Notes will conform to the requirements of Rule 2720 of the Conduct Rules of the NASD.

The underwriter is permitted to engage in certain transactions that stabilize the price of the Notes. These transactions consist of bids or purchases for the purpose of pegging, fixing or maintaining the price of the Notes.

If the underwriter creates a short position in the Notes in connection with the offering, *i.e.*, if it sells more Notes than are set forth on the cover page of this prospectus supplement, the underwriter may reduce that short position by purchasing Notes in the open market. In general, purchases of a security for the purpose of stabilization or to reduce a short position could cause the price of the security to be higher than it might be in the absence of these purchases. "Naked" short sales are sales in excess of the underwriter's over-allotment option or, where no over-allotment option exists, sales in excess of the number of units an underwriter has agreed to purchase from the issuer. Because MLPF&S, as underwriter for the Notes, has no over-allotment option, it would be required to close out a short position in the Notes by purchasing Notes in the open market. Neither ML&Co. nor the underwriter makes any representation or prediction as to the direction or magnitude of any effect that the transactions described above may have on the price of the Notes. In addition, neither ML&Co. nor the underwriter makes any representation that the underwriter will engage in these transactions or that these transactions, once commenced, will not be discontinued without notice.

Table of Contents

MLPF&S may use this prospectus supplement and the accompanying prospectus for offers and sales related to market-making transactions in the Notes. MLPF&S may act as principal or agent in these transactions, and the sales will be made at prices related to prevailing market prices at the time of sale.

VALIDITY OF THE NOTES

The validity of the Notes will be passed upon for ML&Co. and for the underwriter by Sidley Austin Brown & Wood LLP, New York, New York.

EXPERTS

The consolidated financial statements and the related financial statement schedule incorporated in this prospectus supplement by reference from the Annual Report on Form 10-K of Merrill Lynch & Co., Inc. and subsidiaries for the year ended December 27, 2002 have been audited by Deloitte & Touche LLP, independent auditors, as stated in their reports (which express an unqualified opinion, and which report on the consolidated financial statements includes an explanatory paragraph for the change in accounting method for goodwill amortization to conform to Statement of Financial Accounting Standards No. 142, *Goodwill and Other Intangible Assets*), which are incorporated herein by reference, and have been so incorporated in reliance upon the reports of such firm given upon their authority as experts in accounting and auditing.

With respect to the unaudited condensed consolidated financial statements for the periods ended March 28, 2003 and March 29, 2002, which are incorporated herein by reference, Deloitte & Touche LLP have applied limited procedures in accordance with professional standards for a review of such information. However, as stated in their report included in Merrill Lynch & Co., Inc. and subsidiaries' Quarterly Report on Form 10-Q for the quarter ended March 28, 2003 and incorporated by reference herein, they did not audit and they do not express an opinion on those unaudited condensed consolidated financial statements. Accordingly, the degree of reliance on their report on such information should be restricted in light of the limited nature of the review procedures applied. Deloitte & Touche LLP are not subject to the liability provisions of Section 11 of the Securities Act of 1933 for their report on the unaudited condensed consolidated financial statements because that report is not a "report" or a "part" of the registration statement prepared or certified by an accountant within the meaning of Sections 7 and 11 of the Act.

INDEX OF CERTAIN DEFINED TERMS

| | Page |
|-------------------------------|-------------|
| Anniversary Date | S-17 |
| Annual Determination Date | S-17 |
| Business Day | S-15 |
| Calculation Day | S-12 |
| Calculation Period | S-12 |
| Current Quarter | S-18 |
| Current Quarter Dividends | S-18 |
| Dividend Yield | S-16 |
| Ending Value | S-3 |
| Exchange Amount | S-4 |
| Exchange Date | S-12 |
| Exchange Notice Period | S-12 |
| Index Adjustment Factor | S-4 |
| Index Business Day | S-12 |
| Market Disruption Event | S-14 |
| New Stocks | S-17 |
| Notes | S-1 |
| Original Industrial 15 Stock | S-19 |
| Pricing Date | S-3 |
| Redemption Amount | S-3 |
| Industrial 15 Companies | S-8 |
| Industrial 15 Portfolio | S-16 |
| Industrial 15 Portfolio Value | S-16 |
| Industrial 15 Stocks | S-4 |
| Share Multiplier | S-17 |
| Starting Value | S-3 |
| successor index | S-14 |
| Unit | S-3 |

[Table of Contents](#)

ANNEX A

This annex contains tables which provide a brief synopsis of the business of each of the Industrial 15 Companies as well as the split-adjusted month-end closing market prices for each Industrial 15 Stock in each month from January 1997 through June 2003 (or from the first month-end for which such data is available). Please note that the historical prices of the Industrial 15 Stocks are not indicative of the future performance of the Industrial 15 Stocks or the Industrial 15 Index. The following information, with respect to the business of each company, has been derived from publicly available documents published by the Industrial 15 Companies. Because the common stock of the Industrial 15 Companies is registered under the Exchange Act, the Industrial 15 Companies are required to file periodically financial and other information specified by the SEC. For more information about the Industrial 15 Companies, information provided to or filed with the SEC by the Industrial 15 Companies can be inspected at the SEC's public reference facilities or accessed through the SEC's web site referenced in this prospectus supplement under the section entitled "Where You Can Find More Information".

ABBOTT LABORATORIES

Abbott Laboratories is a health care company that discovers, develops, manufactures and sells health care products. Abbott's principal businesses are pharmaceutical products, nutritionals, and medical products, including diagnostics and cardiovascular devices.

| 1997 | Closing Price | 1998 | Closing Price | 1999 | Closing Price | 2000 | Closing Price | 2001 | Closing Price | 2002 | Closing Price | 2003 | Closing Price |
|-----------|---------------|-----------|---------------|-----------|---------------|-----------|---------------|-----------|---------------|-----------|---------------|----------|---------------|
| January | 27.19 | January | 35.41 | January | 46.44 | January | 32.63 | January | 44.86 | January | 57.70 | January | 38.12 |
| February | 28.13 | February | 37.41 | February | 46.44 | February | 32.75 | February | 48.99 | February | 56.55 | February | 35.62 |
| March | 28.06 | March | 37.66 | March | 46.81 | March | 35.19 | March | 47.19 | March | 52.60 | March | 37.61 |
| April | 30.50 | April | 36.56 | April | 48.44 | April | 38.44 | April | 46.38 | April | 53.95 | April | 40.63 |
| May | 31.50 | May | 37.09 | May | 45.19 | May | 40.69 | May | 51.98 | May | 47.50 | May | 44.55 |
| June | 33.38 | June | 40.88 | June | 45.50 | June | 44.56 | June | 48.01 | June | 37.65 | June | 43.76 |
| July | 32.72 | July | 41.56 | July | 42.94 | July | 41.63 | July | 53.59 | July | 41.41 | | |
| August | 29.97 | August | 38.50 | August | 43.38 | August | 43.75 | August | 49.70 | August | 40.03 | | |
| September | 31.97 | September | 43.44 | September | 36.75 | September | 47.56 | September | 51.85 | September | 40.40 | | |
| October | 30.66 | October | 46.94 | October | 40.38 | October | 52.81 | October | 52.98 | October | 41.87 | | |
| November | 32.50 | November | 48.00 | November | 38.00 | November | 55.06 | November | 55.00 | November | 43.78 | | |
| December | 32.78 | December | 49.00 | December | 36.31 | December | 48.44 | December | 55.75 | December | 40.00 | | |

The closing price on July 30, 2003 was 39.28.

ALBERTSON'S, INC.

Albertson's, Inc., is a retail food and drug chain. Albertson's operates under the names of Albertsons, Albertsons-Osco, Albertsons-Sav-on, Jewel-Osco, Acme, Super Saver Foods, Max Foods, Osco Drug and Sav-on Drugs. Their stores consist of combination food-drug stores, stand-alone drug stores, conventional and warehouse stores.

| 1997 | Closing Price | 1998 | Closing Price | 1999 | Closing Price | 2000 | Closing Price | 2001 | Closing Price | 2002 | Closing Price | 2003 | Closing Price |
|-----------|---------------|-----------|---------------|-----------|---------------|-----------|---------------|-----------|---------------|-----------|---------------|----------|---------------|
| January | 35.00 | January | 47.69 | January | 61.00 | January | 30.63 | January | 28.35 | January | 28.75 | January | 21.50 |
| February | 35.25 | February | 46.81 | February | 57.00 | February | 24.50 | February | 29.05 | February | 30.26 | February | 18.83 |
| March | 34.00 | March | 52.63 | March | 54.31 | March | 31.00 | March | 31.82 | March | 33.14 | March | 18.85 |
| April | 33.00 | April | 50.00 | April | 51.50 | April | 32.56 | April | 33.40 | April | 33.54 | April | 19.86 |
| May | 33.50 | May | 46.31 | May | 53.50 | May | 36.63 | May | 28.70 | May | 35.17 | May | 20.87 |
| June | 36.50 | June | 51.81 | June | 51.56 | June | 33.25 | June | 29.99 | June | 30.46 | June | 19.20 |
| July | 37.06 | July | 48.06 | July | 49.69 | July | 30.19 | July | 32.73 | July | 28.18 | | |
| August | 34.38 | August | 50.56 | August | 47.94 | August | 21.50 | August | 34.99 | August | 25.72 | | |
| September | 34.88 | September | 54.13 | September | 39.56 | September | 21.00 | September | 31.88 | September | 24.16 | | |
| October | 36.88 | October | 55.56 | October | 36.31 | October | 23.69 | October | 31.91 | October | 22.31 | | |
| November | 44.38 | November | 57.06 | November | 31.94 | November | 25.56 | November | 33.56 | November | 23.34 | | |
| December | 47.38 | December | 63.69 | December | 32.25 | December | 26.50 | December | 31.49 | December | 22.26 | | |

The closing price on July 30, 2003 was 18.74.

[Table of Contents](#)

ANHEUSER-BUSCH COMPANIES, INC.

Anheuser-Busch Companies, Inc. (the “Company”) is the holding company parent of Anheuser-Busch, Incorporated (“ABI”). In addition to ABI, a large brewer of beer, the Company is also the parent corporation to a number of subsidiaries that conduct various other business operations. The Company’s operations include the following principle business segments: domestic beer, international beer, packaging and entertainment.

| 1997 | Closing Price | 1998 | Closing Price | 1999 | Closing Price | 2000 | Closing Price | 2001 | Closing Price | 2002 | Closing Price | 2003 | Closing Price |
|-----------|---------------|-----------|---------------|-----------|---------------|-----------|---------------|-----------|---------------|-----------|---------------|----------|---------------|
| January | 21.25 | January | 22.47 | January | 35.34 | January | 33.75 | January | 43.36 | January | 47.27 | January | 47.47 |
| February | 22.25 | February | 23.44 | February | 38.34 | February | 32.06 | February | 43.70 | February | 50.85 | February | 46.50 |
| March | 21.06 | March | 23.16 | March | 38.09 | March | 31.13 | March | 45.93 | March | 52.20 | March | 46.61 |
| April | 21.44 | April | 22.91 | April | 36.56 | April | 35.28 | April | 39.99 | April | 53.00 | April | 49.88 |
| May | 21.44 | May | 22.97 | May | 36.53 | May | 38.75 | May | 44.00 | May | 51.61 | May | 52.63 |
| June | 20.97 | June | 23.59 | June | 35.47 | June | 37.34 | June | 41.20 | June | 50.00 | June | 51.05 |
| July | 21.47 | July | 25.84 | July | 39.47 | July | 40.25 | July | 43.31 | July | 51.71 | | |
| August | 21.31 | August | 23.06 | August | 38.50 | August | 39.41 | August | 43.04 | August | 53.16 | | |
| September | 22.56 | September | 27.00 | September | 35.03 | September | 42.31 | September | 41.88 | September | 50.60 | | |
| October | 19.97 | October | 29.72 | October | 35.91 | October | 45.75 | October | 41.66 | October | 52.76 | | |
| November | 21.59 | November | 30.31 | November | 37.41 | November | 47.44 | November | 43.10 | November | 49.12 | | |
| December | 22.00 | December | 32.81 | December | 35.44 | December | 45.50 | December | 45.21 | December | 48.40 | | |

The closing price on July 30, 2003 was 52.00.

BRISTOL-MYERS SQUIBB COMPANY

Bristol-Myers Squibb Company is a health and personal care company that focuses on the manufacture and sale of a range of pharmaceutical and related products. These products include: cardiovascular and anti-cancer prescription pharmaceuticals; consumer medicines, such as analgesics; skin care products and nutritional products.

| 1997 | Closing Price | 1998 | Closing Price | 1999 | Closing Price | 2000 | Closing Price | 2001 | Closing Price | 2002 | Closing Price | 2003 | Closing Price |
|-----------|---------------|-----------|---------------|-----------|---------------|-----------|---------------|-----------|---------------|-----------|---------------|----------|---------------|
| January | 30.22 | January | 47.44 | January | 61.00 | January | 62.82 | January | 58.91 | January | 45.37 | January | 23.59 |
| February | 31.05 | February | 47.68 | February | 59.93 | February | 54.07 | February | 60.35 | February | 47.00 | February | 23.30 |
| March | 28.08 | March | 49.64 | March | 61.21 | March | 54.97 | March | 56.54 | March | 40.49 | March | 21.13 |
| April | 31.17 | April | 50.38 | April | 60.50 | April | 49.91 | April | 53.30 | April | 28.80 | April | 25.54 |
| May | 34.92 | May | 51.16 | May | 65.32 | May | 52.41 | May | 51.62 | May | 31.12 | May | 25.60 |
| June | 38.55 | June | 54.70 | June | 67.04 | June | 55.44 | June | 49.78 | June | 25.70 | June | 27.15 |
| July | 37.33 | July | 54.22 | July | 63.29 | July | 47.23 | July | 56.29 | July | 23.43 | | |
| August | 36.17 | August | 46.58 | August | 66.98 | August | 50.44 | August | 56.14 | August | 24.95 | | |
| September | 39.38 | September | 49.43 | September | 64.24 | September | 54.37 | September | 55.56 | September | 23.80 | | |
| October | 41.76 | October | 52.62 | October | 73.11 | October | 58.00 | October | 53.45 | October | 24.61 | | |
| November | 44.56 | November | 58.33 | November | 69.54 | November | 65.97 | November | 53.76 | November | 26.50 | | |
| December | 45.03 | December | 63.68 | December | 61.09 | December | 70.37 | December | 51.00 | December | 23.15 | | |

The closing price on July 30, 2003 was 26.48.

[Table of Contents](#)

THE CLOROX COMPANY

The Clorox Company is engaged primarily in the production and marketing of non-durable consumer products sold primarily through grocery and other retail stores. Clorox's product line includes household cleaning products, home care products, water filtration products, food storage products and various other consumer products. Clorox manufactures and markets its products in several continents worldwide.

| 1997 | Closing Price | 1998 | Closing Price | 1999 | Closing Price | 2000 | Closing Price | 2001 | Closing Price | 2002 | Closing Price | 2003 | Closing Price |
|-----------|---------------|-----------|---------------|-----------|---------------|-----------|---------------|-----------|---------------|-----------|---------------|----------|---------------|
| January | 29.66 | January | 38.31 | January | 62.56 | January | 47.75 | January | 33.75 | January | 40.78 | January | 38.22 |
| February | 29.88 | February | 43.88 | February | 59.16 | February | 40.44 | February | 35.96 | February | 43.79 | February | 42.31 |
| March | 28.03 | March | 42.84 | March | 58.59 | March | 32.50 | March | 31.45 | March | 43.63 | March | 46.17 |
| April | 31.84 | April | 41.94 | April | 57.69 | April | 36.75 | April | 31.83 | April | 44.25 | April | 45.22 |
| May | 31.56 | May | 41.75 | May | 50.47 | May | 39.63 | May | 34.64 | May | 45.80 | May | 44.66 |
| June | 33.00 | June | 47.69 | June | 53.41 | June | 44.81 | June | 33.85 | June | 41.35 | June | 42.65 |
| July | 34.91 | July | 51.25 | July | 56.00 | July | 41.31 | July | 37.38 | July | 38.50 | | |
| August | 32.81 | August | 48.22 | August | 45.25 | August | 36.19 | August | 37.25 | August | 43.06 | | |
| September | 37.06 | September | 41.25 | September | 38.25 | September | 39.56 | September | 37.00 | September | 40.18 | | |
| October | 35.00 | October | 54.63 | October | 40.94 | October | 44.63 | October | 35.70 | October | 44.93 | | |
| November | 38.81 | November | 55.53 | November | 44.56 | November | 44.69 | November | 39.52 | November | 43.84 | | |
| December | 39.53 | December | 58.41 | December | 50.38 | December | 35.50 | December | 39.55 | December | 41.25 | | |

The closing price on July 30, 2003 was 43.60.

CONAGRA FOODS, INC.

ConAgra Foods, Inc. operates in several different areas of the food business and produces a wide variety of products including packaged foods, food ingredients and agricultural products. Products produced by ConAgra include shelf-stable products such as canned goods and cooking oils, in addition to frozen food products, and refrigerated food products.

| 1997 | Closing Price | 1998 | Closing Price | 1999 | Closing Price | 2000 | Closing Price | 2001 | Closing Price | 2002 | Closing Price | 2003 | Closing Price |
|-----------|---------------|-----------|---------------|-----------|---------------|-----------|---------------|-----------|---------------|-----------|---------------|----------|---------------|
| January | 25.25 | January | 31.63 | January | 32.50 | January | 21.38 | January | 23.40 | January | 24.80 | January | 24.53 |
| February | 26.50 | February | 30.00 | February | 30.13 | February | 16.38 | February | 19.68 | February | 23.41 | February | 23.07 |
| March | 27.13 | March | 32.13 | March | 25.56 | March | 18.13 | March | 18.24 | March | 24.25 | March | 20.08 |
| April | 28.81 | April | 29.19 | April | 24.88 | April | 18.88 | April | 20.81 | April | 24.50 | April | 21.00 |
| May | 30.06 | May | 29.25 | May | 26.06 | May | 23.06 | May | 20.85 | May | 24.61 | May | 24.27 |
| June | 32.06 | June | 31.69 | June | 26.63 | June | 19.06 | June | 19.81 | June | 27.65 | June | 23.60 |
| July | 35.16 | July | 25.88 | July | 25.56 | July | 20.44 | July | 21.49 | July | 25.11 | | |
| August | 32.16 | August | 24.75 | August | 24.50 | August | 18.31 | August | 22.95 | August | 26.29 | | |
| September | 33.00 | September | 26.94 | September | 22.56 | September | 20.06 | September | 22.45 | September | 24.85 | | |
| October | 30.13 | October | 30.44 | October | 26.06 | October | 21.38 | October | 22.90 | October | 24.25 | | |
| November | 35.94 | November | 31.44 | November | 24.13 | November | 25.44 | November | 22.97 | November | 24.37 | | |
| December | 32.81 | December | 31.50 | December | 22.56 | December | 26.00 | December | 23.77 | December | 25.01 | | |

The closing price on July 30, 2003 was 23.13.

COLGATE-PALMOLIVE COMPANY

Colgate-Palmolive Company is a consumer products company whose products are marketed in over 200 countries and territories. Colgate-Palmolive Company manufactures and markets an array of products including toothpaste, bar and liquid hand soaps, shower gels, shampoos, conditioners, deodorants and antiperspirants and shave products.

| 1997 | Closing Price | 1998 | Closing Price | 1999 | Closing Price | 2000 | Closing Price | 2001 | Closing Price | 2002 | Closing Price | 2003 | Closing Price |
|-----------|---------------|-----------|---------------|-----------|---------------|-----------|---------------|-----------|---------------|-----------|---------------|----------|---------------|
| January | 24.19 | January | 36.63 | January | 40.22 | January | 59.25 | January | 60.08 | January | 57.15 | January | 50.91 |
| February | 25.88 | February | 40.59 | February | 42.44 | February | 52.19 | February | 59.05 | February | 55.98 | February | 50.31 |
| March | 24.91 | March | 43.31 | March | 46.00 | March | 56.38 | March | 55.26 | March | 57.15 | March | 54.44 |
| April | 27.75 | April | 44.84 | April | 51.22 | April | 57.13 | April | 55.85 | April | 53.01 | April | 57.17 |
| May | 31.00 | May | 43.50 | May | 49.94 | May | 52.63 | May | 56.64 | May | 54.20 | May | 59.62 |
| June | 32.63 | June | 44.00 | June | 49.38 | June | 59.88 | June | 58.99 | June | 50.05 | June | 57.95 |
| July | 37.88 | July | 46.22 | July | 49.38 | July | 55.69 | July | 54.20 | July | 51.35 | | |
| August | 31.38 | August | 36.06 | August | 53.50 | August | 50.94 | August | 54.15 | August | 54.55 | | |
| September | 34.84 | September | 34.25 | September | 45.75 | September | 47.20 | September | 58.25 | September | 53.95 | | |
| October | 32.38 | October | 44.19 | October | 60.50 | October | 58.76 | October | 57.52 | October | 54.98 | | |
| November | 33.41 | November | 42.81 | November | 54.88 | November | 58.75 | November | 58.36 | November | 51.39 | | |
| December | 36.75 | December | 46.44 | December | 65.00 | December | 64.55 | December | 57.75 | December | 52.43 | | |

The closing price on July 30, 2003 was 55.12.

EMERSON ELECTRIC CO.

Emerson Electric Co. is principally engaged in the design, manufacture and sale of a range of electrical, electromechanical and electronic products and systems. Emerson offers product lines that include various products and systems involving industrial automation, electronics and telecommunications, heating, ventilating and air conditioning systems, appliances and tools.

| 1997 | Closing Price | 1998 | Closing Price | 1999 | Closing Price | 2000 | Closing Price | 2001 | Closing Price | 2002 | Closing Price | 2003 | Closing Price |
|-----------|---------------|-----------|---------------|-----------|---------------|-----------|---------------|-----------|---------------|-----------|---------------|----------|---------------|
| January | 49.38 | January | 60.50 | January | 58.19 | January | 55.06 | January | 76.00 | January | 57.94 | January | 46.93 |
| February | 49.50 | February | 63.81 | February | 57.44 | February | 45.56 | February | 66.90 | February | 57.59 | February | 47.07 |
| March | 45.00 | March | 65.19 | March | 52.94 | March | 52.88 | March | 62.00 | March | 57.39 | March | 45.35 |
| April | 50.75 | April | 63.63 | April | 64.50 | April | 54.88 | April | 66.65 | April | 53.39 | April | 50.70 |
| May | 54.00 | May | 60.75 | May | 63.88 | May | 59.00 | May | 67.71 | May | 57.85 | May | 52.30 |
| June | 55.06 | June | 60.38 | June | 62.88 | June | 60.38 | June | 60.50 | June | 53.51 | June | 51.10 |
| July | 59.00 | July | 59.44 | July | 59.69 | July | 61.06 | July | 57.36 | July | 50.95 | | |
| August | 54.69 | August | 57.00 | August | 62.63 | August | 66.19 | August | 53.60 | August | 48.78 | | |
| September | 57.63 | September | 62.25 | September | 63.19 | September | 67.00 | September | 47.06 | September | 43.94 | | |
| October | 52.44 | October | 66.00 | October | 60.06 | October | 73.44 | October | 49.02 | October | 48.18 | | |
| November | 55.00 | November | 65.00 | November | 57.00 | November | 72.88 | November | 54.06 | November | 52.15 | | |
| December | 56.44 | December | 60.50 | December | 57.38 | December | 78.81 | December | 57.10 | December | 50.85 | | |

The closing price on July 30, 2003 was 52.64.

[Table of Contents](#)

INGERSOLL-RAND COMPANY LIMITED

Ingersoll-Rand is a provider of climate control, industrial solutions, infrastructure development and security and safety products. Ingersoll-Rand offers products that include transport temperature control units for truck trailers, small trucks, seagoing containers and air conditioning for buses. In addition, Ingersoll-Rand engages in the design, manufacture, sale and service of air compressors, fluid products, microturbines, and industrial tools.

| 1997 | Closing Price | 1998 | Closing Price | 1999 | Closing Price | 2000 | Closing Price | 2001 | Closing Price | 2002 | Closing Price | 2003 | Closing Price |
|-----------|---------------|-----------|---------------|-----------|---------------|-----------|---------------|-----------|---------------|-----------|---------------|----------|---------------|
| January | 30.42 | January | 39.75 | January | 47.50 | January | 47.06 | January | 44.31 | January | 44.23 | January | 39.26 |
| February | 31.67 | February | 47.63 | February | 47.50 | February | 38.31 | February | 43.35 | February | 50.00 | February | 39.45 |
| March | 29.08 | March | 47.94 | March | 49.63 | March | 44.25 | March | 39.71 | March | 50.02 | March | 38.59 |
| April | 32.75 | April | 46.06 | April | 69.19 | April | 46.94 | April | 47.00 | April | 49.95 | April | 44.08 |
| May | 36.33 | May | 45.06 | May | 63.69 | May | 45.56 | May | 49.35 | May | 50.35 | May | 43.80 |
| June | 41.17 | June | 44.06 | June | 64.63 | June | 40.25 | June | 41.20 | June | 45.66 | June | 47.32 |
| July | 45.38 | July | 44.19 | July | 64.31 | July | 39.25 | July | 43.68 | July | 38.39 | | |
| August | 40.08 | August | 39.75 | August | 63.63 | August | 45.56 | August | 40.57 | August | 37.55 | | |
| September | 43.06 | September | 37.94 | September | 54.94 | September | 33.88 | September | 33.80 | September | 34.44 | | |
| October | 38.94 | October | 50.50 | October | 52.25 | October | 37.75 | October | 37.30 | October | 39.00 | | |
| November | 40.88 | November | 46.81 | November | 48.44 | November | 40.25 | November | 41.89 | November | 46.20 | | |
| December | 40.50 | December | 46.94 | December | 55.06 | December | 41.88 | December | 41.81 | December | 43.06 | | |

The closing price on July 30, 2003 was 53.56.

JOHNSON CONTROLS, INC.

Johnson Controls, Inc. provides building control systems and services including comfort, energy and security management for the non-residential buildings market. In addition, Johnson provides for the integration of management, operation and control of building systems such as temperature, ventilation, humidity, fire safety and security. Johnson also supplies various automotive interior products, including seating, instrument panels, overhead components, floor consoles and door systems, electronics and batteries.

| 1997 | Closing Price | 1998 | Closing Price | 1999 | Closing Price | 2000 | Closing Price | 2001 | Closing Price | 2002 | Closing Price | 2003 | Closing Price |
|-----------|---------------|-----------|---------------|-----------|---------------|-----------|---------------|-----------|---------------|-----------|---------------|----------|---------------|
| January | 43.00 | January | 50.69 | January | 64.44 | January | 55.25 | January | 64.98 | January | 84.06 | January | 80.77 |
| February | 42.13 | February | 55.56 | February | 61.50 | February | 53.38 | February | 66.48 | February | 88.76 | February | 77.96 |
| March | 40.25 | March | 60.69 | March | 62.38 | March | 54.06 | March | 62.46 | March | 88.31 | March | 72.44 |
| April | 38.38 | April | 59.38 | April | 72.94 | April | 63.31 | April | 72.40 | April | 86.25 | April | 82.24 |
| May | 42.38 | May | 59.50 | May | 63.06 | May | 56.94 | May | 70.40 | May | 88.06 | May | 83.25 |
| June | 41.06 | June | 57.19 | June | 69.31 | June | 51.31 | June | 72.47 | June | 81.61 | June | 85.60 |
| July | 44.81 | July | 52.31 | July | 68.56 | July | 51.94 | July | 80.60 | July | 81.02 | | |
| August | 47.69 | August | 42.81 | August | 68.38 | August | 53.44 | August | 73.25 | August | 86.29 | | |
| September | 49.56 | September | 46.50 | September | 66.31 | September | 53.19 | September | 65.24 | September | 76.82 | | |
| October | 44.88 | October | 56.25 | October | 60.75 | October | 59.63 | October | 72.32 | October | 78.00 | | |
| November | 45.81 | November | 57.88 | November | 54.50 | November | 55.13 | November | 79.52 | November | 82.89 | | |
| December | 47.75 | December | 59.00 | December | 56.88 | December | 52.00 | December | 80.75 | December | 80.17 | | |

The closing price on July 30, 2003 was 96.12.

[Table of Contents](#)

PAYCHEX, INC.

Paychex, Inc. is a provider of payroll and integrated human resource and employee benefit outsourcing solutions for small- to medium-sized businesses. Paychex offers payroll, payroll-related, and human resource products that include payroll processing, tax filing and payments, employee pay, retirement services administration, employee benefits administration, regulatory compliance (new hire reporting and garnishment processing), workers' compensation insurance, and human resource administrative services.

| 1997 | Closing Price | 1998 | Closing Price | 1999 | Closing Price | 2000 | Closing Price | 2001 | Closing Price | 2002 | Closing Price | 2003 | Closing Price |
|-----------|---------------|-----------|---------------|-----------|---------------|-----------|---------------|-----------|---------------|-----------|---------------|----------|---------------|
| January | 9.58 | January | 14.17 | January | 21.64 | January | 29.38 | January | 45.13 | January | 36.70 | January | 25.18 |
| February | 8.59 | February | 15.30 | February | 18.83 | February | 33.38 | February | 39.94 | February | 36.95 | February | 26.24 |
| March | 8.12 | March | 17.09 | March | 21.08 | March | 34.92 | March | 37.06 | March | 39.70 | March | 27.47 |
| April | 9.25 | April | 16.09 | April | 22.69 | April | 35.08 | April | 34.56 | April | 37.33 | April | 31.15 |
| May | 10.89 | May | 16.00 | May | 19.75 | May | 35.00 | May | 38.43 | May | 34.65 | May | 30.52 |
| June | 11.26 | June | 18.08 | June | 21.25 | June | 42.00 | June | 40.00 | June | 31.29 | June | 29.39 |
| July | 11.96 | July | 17.97 | July | 18.71 | July | 45.75 | July | 39.30 | July | 26.31 | | |
| August | 10.15 | August | 16.89 | August | 19.63 | August | 44.63 | August | 37.07 | August | 23.40 | | |
| September | 10.33 | September | 22.92 | September | 22.75 | September | 52.50 | September | 31.51 | September | 24.27 | | |
| October | 11.30 | October | 22.11 | October | 26.25 | October | 56.69 | October | 32.06 | October | 28.82 | | |
| November | 12.15 | November | 22.11 | November | 26.63 | November | 58.13 | November | 35.01 | November | 29.20 | | |
| December | 15.00 | December | 22.86 | December | 26.67 | December | 48.63 | December | 34.85 | December | 27.90 | | |

The closing price on July 30, 2003 was 31.15.

PFIZER INC.

Pfizer Inc. is a research-based, global pharmaceutical company. Pfizer develops, manufactures and markets prescription medicines for humans and animals as well as many over-the-counter products. Pfizer's prescription pharmaceuticals include treatments for cardiovascular diseases, infectious diseases, central nervous system disorders, diabetes, arthritis, urogenital conditions, allergies and other disorders. In addition, Pfizer manufactures consumer care products that include medications for oral care, upper respiratory health, eye care, skincare and gastrointestinal health.

| 1997 | Closing Price | 1998 | Closing Price | 1999 | Closing Price | 2000 | Closing Price | 2001 | Closing Price | 2002 | Closing Price | 2003 | Closing Price |
|-----------|---------------|-----------|---------------|-----------|---------------|-----------|---------------|-----------|---------------|-----------|---------------|----------|---------------|
| January | 15.48 | January | 27.31 | January | 42.88 | January | 36.38 | January | 45.15 | January | 41.67 | January | 30.36 |
| February | 15.27 | February | 29.50 | February | 43.98 | February | 32.13 | February | 45.00 | February | 40.96 | February | 29.82 |
| March | 14.02 | March | 33.23 | March | 46.25 | March | 36.56 | March | 40.95 | March | 39.74 | March | 31.16 |
| April | 16.00 | April | 37.94 | April | 38.35 | April | 42.13 | April | 43.30 | April | 36.35 | April | 30.75 |
| May | 17.15 | May | 34.94 | May | 35.67 | May | 44.56 | May | 42.89 | May | 34.60 | May | 31.02 |
| June | 19.92 | June | 36.23 | June | 36.58 | June | 48.00 | June | 40.05 | June | 35.00 | June | 34.15 |
| July | 19.88 | July | 36.67 | July | 33.94 | July | 43.13 | July | 41.22 | July | 32.35 | | |
| August | 18.46 | August | 31.00 | August | 37.75 | August | 43.25 | August | 38.31 | August | 33.08 | | |
| September | 20.02 | September | 35.31 | September | 35.94 | September | 44.94 | September | 40.10 | September | 29.02 | | |
| October | 23.58 | October | 35.77 | October | 39.50 | October | 43.19 | October | 41.90 | October | 31.77 | | |
| November | 24.25 | November | 37.21 | November | 36.19 | November | 44.31 | November | 43.31 | November | 31.54 | | |
| December | 24.85 | December | 41.81 | December | 32.44 | December | 46.00 | December | 39.85 | December | 30.57 | | |

The closing price on July 30, 2003 was 33.39.

ROHM AND HAAS COMPANY

Rohm and Haas Company manufactures and markets a variety of specialty chemicals and materials. These chemicals are used in paint and coatings, electronic materials, household products, adhesives, plastics and salt. Rohm and Haas and its subsidiaries operate manufacturing facilities worldwide.

| 1997 | Closing Price | 1998 | Closing Price | 1999 | Closing Price | 2000 | Closing Price | 2001 | Closing Price | 2002 | Closing Price | 2003 | Closing Price |
|-----------|---------------|-----------|---------------|-----------|---------------|-----------|---------------|-----------|---------------|-----------|---------------|----------|---------------|
| January | 27.33 | January | 28.58 | January | 31.00 | January | 42.25 | January | 35.90 | January | 36.78 | January | 30.85 |
| February | 30.67 | February | 33.98 | February | 31.25 | February | 40.38 | February | 36.75 | February | 38.41 | February | 28.54 |
| March | 24.96 | March | 34.44 | March | 33.56 | March | 44.63 | March | 30.81 | March | 42.27 | March | 29.78 |
| April | 27.75 | April | 35.94 | April | 44.81 | April | 35.63 | April | 34.37 | April | 37.11 | April | 33.11 |
| May | 28.75 | May | 36.63 | May | 40.13 | May | 34.13 | May | 33.20 | May | 37.68 | May | 32.43 |
| June | 30.02 | June | 34.65 | June | 42.88 | June | 34.50 | June | 32.90 | June | 40.49 | June | 31.03 |
| July | 32.67 | July | 32.46 | July | 42.63 | July | 26.00 | July | 34.34 | July | 37.50 | | |
| August | 31.94 | August | 28.77 | August | 37.38 | August | 28.94 | August | 35.91 | August | 36.39 | | |
| September | 31.98 | September | 27.81 | September | 36.13 | September | 29.06 | September | 32.76 | September | 31.00 | | |
| October | 27.77 | October | 33.75 | October | 38.25 | October | 30.06 | October | 32.47 | October | 33.27 | | |
| November | 30.65 | November | 34.94 | November | 36.63 | November | 29.75 | November | 35.50 | November | 35.39 | | |
| December | 31.92 | December | 30.13 | December | 40.69 | December | 36.31 | December | 34.63 | December | 32.48 | | |

The closing price on July 30, 2003 was 34.89.

SCHERING-PLOUGH CORPORATION

The Schering-Plough Corporation is a researched based company engaging in the discovery, development, manufacturing and marketing of pharmaceutical products worldwide. Schering-Plough operates primarily in the prescription pharmaceutical marketplace. However, where appropriate, Schering-Plough has sought and may in the future seek regulatory approval to switch prescription products to over-the-counter status as a means of extending a product's life cycle.

| 1997 | Closing Price | 1998 | Closing Price | 1999 | Closing Price | 2000 | Closing Price | 2001 | Closing Price | 2002 | Closing Price | 2003 | Closing Price |
|-----------|---------------|-----------|---------------|-----------|---------------|-----------|---------------|-----------|---------------|-----------|---------------|----------|---------------|
| January | 18.91 | January | 36.19 | January | 54.50 | January | 44.00 | January | 50.40 | January | 32.38 | January | 18.11 |
| February | 19.16 | February | 38.03 | February | 55.94 | February | 34.88 | February | 40.25 | February | 34.49 | February | 18.02 |
| March | 18.19 | March | 40.84 | March | 55.31 | March | 36.75 | March | 36.53 | March | 31.30 | March | 17.83 |
| April | 20.00 | April | 40.06 | April | 48.31 | April | 40.31 | April | 38.54 | April | 27.30 | April | 18.10 |
| May | 22.69 | May | 41.84 | May | 45.06 | May | 48.38 | May | 41.95 | May | 26.45 | May | 18.45 |
| June | 23.94 | June | 45.81 | June | 53.00 | June | 50.50 | June | 36.24 | June | 24.60 | June | 18.60 |
| July | 27.28 | July | 48.38 | July | 49.00 | July | 43.19 | July | 39.05 | July | 25.50 | | |
| August | 24.00 | August | 43.00 | August | 52.56 | August | 40.13 | August | 38.13 | August | 23.08 | | |
| September | 25.75 | September | 51.78 | September | 43.63 | September | 46.50 | September | 37.10 | September | 21.32 | | |
| October | 28.03 | October | 51.44 | October | 49.50 | October | 51.69 | October | 37.18 | October | 21.35 | | |
| November | 31.34 | November | 53.19 | November | 51.13 | November | 56.06 | November | 35.73 | November | 22.66 | | |
| December | 31.06 | December | 55.25 | December | 42.19 | December | 56.75 | December | 35.81 | December | 22.20 | | |

The closing price on July 30, 2003 was 17.15.

[Table of Contents](#)

WM. WRIGLEY JR. COMPANY

Wm. Wrigley Jr. Company manufactures and markets confectionery products, primarily chewing gum. The Company markets chewing gum and other confections primarily through distributors, wholesalers, corporate chains and cooperative buying groups that distribute the product through retail outlets. Additional direct customers include vending distributors and other customers purchasing in wholesale quantities.

| 1997 | Closing Price | 1998 | Closing Price | 1999 | Closing Price | 2000 | Closing Price | 2001 | Closing Price | 2002 | Closing Price | 2003 | Closing Price |
|-----------|---------------|-----------|---------------|-----------|---------------|-----------|---------------|-----------|---------------|-----------|---------------|----------|---------------|
| January | 29.06 | January | 36.97 | January | 46.81 | January | 39.00 | January | 43.70 | January | 54.64 | January | 55.52 |
| February | 29.94 | February | 38.19 | February | 46.50 | February | 33.81 | February | 46.56 | February | 56.04 | February | 53.63 |
| March | 29.19 | March | 40.88 | March | 45.22 | March | 38.41 | March | 48.25 | March | 53.31 | March | 56.50 |
| April | 29.13 | April | 44.50 | April | 44.34 | April | 36.19 | April | 48.31 | April | 55.00 | April | 56.71 |
| May | 29.63 | May | 48.13 | May | 43.53 | May | 40.03 | May | 48.03 | May | 57.31 | May | 56.50 |
| June | 33.50 | June | 49.00 | June | 45.00 | June | 40.09 | June | 46.85 | June | 55.35 | June | 56.23 |
| July | 38.47 | July | 44.84 | July | 39.84 | July | 38.00 | July | 49.92 | July | 51.15 | | |
| August | 36.25 | August | 38.75 | August | 39.16 | August | 37.03 | August | 50.14 | August | 50.91 | | |
| September | 37.66 | September | 37.97 | September | 34.41 | September | 37.44 | September | 51.30 | September | 49.49 | | |
| October | 36.19 | October | 40.47 | October | 39.97 | October | 39.59 | October | 50.05 | October | 52.77 | | |
| November | 39.56 | November | 44.06 | November | 41.59 | November | 45.41 | November | 50.54 | November | 53.79 | | |
| December | 39.78 | December | 44.78 | December | 41.47 | December | 47.91 | December | 51.37 | December | 54.88 | | |

The closing price on July 30, 2003 was 55.01.



2,500,000 Units

Merrill Lynch & Co., Inc.

**Strategic Return Notes®
Linked to the Industrial 15 Index due August 5, 2008
(the “Notes”)
\$10 original public offering price per Unit**

PROSPECTUS SUPPLEMENT

Merrill Lynch & Co.

July 30, 2003

“Strategic Return Notes” is a registered mark of Merrill Lynch & Co., Inc.
